

West Midlands Combatting Drugs and Alcohol Partnership

Progress Report 2025

Published March 2026

Written by Ellie Parsonage (Performance Officer) and Esther Whittock (Policy Officer)

1 Background

As part of the 2021 drugs strategy, every local area across England was requested to form a Combatting Drugs Partnership.

These partnerships bring together a range of local partners - including enforcement, treatment, recovery, and prevention – and provide a single setting for understanding and addressing shared challenges related to drug-related harm, based on local context and need.

The West Midlands Combatting Drugs and Alcohol Partnership (WMCDAP) acts as a multi-agency board overseeing the three strands of the 'From Harm to Hope' national drug strategy:

1. break drug supply chains
2. deliver a world-class treatment and recovery system
3. achieve a shift in the demand for drugs

This end of year report presents key data demonstrating the West Midlands progress against the Combatting Drugs and Alcohol Partnership (CDAP) framework. The data presented in this document is drawn from multiple time periods, reflecting the availability of data.

2 The West Midlands Combatting Drugs and Alcohol Partnership

The WMCDAP covers the seven local authority areas that make up the West Midlands Metropolitan Area:

- Birmingham City Council
- City of Wolverhampton Council
- Coventry City Council
- Dudley Metropolitan Borough Council
- Sandwell Metropolitan Borough Council
- Solihull Metropolitan Borough Council
- Walsall Metropolitan Borough Council

You will find an outline of the scope of WMCDAP activity, the membership, the governance and the Delivery Plan of the WMCDAP on the West Midlands Police and Crime Commissioner's website:

[West Midlands Combatting Drugs and Alcohol Partnership \(CDAP\) - West Midlands Police & Crime Commissioner \(westmidlands-pcc.gov.uk\)](https://www.westmidlands-pcc.gov.uk)

3 How WMCDAP is Addressing Drug and Alcohol Caused Harms

The WMCDAP delivery plan identifies several sub-groups, deep dives and task and finish groups that need to be established to progress some of the gaps identified by the previous Local Needs Assessment.

The West Midlands Local Needs Assessment is currently being reviewed, and this will shape the development of the Delivery Plan to ensure all WMCDAP activity is evidence-based and meeting the needs of the people of the West Midlands.

Deep Dives

Currently, the seven local CDAPs have been tasked with understanding the treatment journey in their area, looking into people whose needs are not met by treatment services as they do not take up a referral or drop out. In addition, the Police and Crime Commissioner's Arrest Referral Service will report, on a quarterly basis, reasons why individuals do not want a referral into treatment, which is fed back to the local treatment providers.

Sub-groups

One of the commitments in the delivery plan is to develop lived experience input into the regional forum. The Lived Experience Sub-Group meets regularly and provides advice, support and guidance on individual commitments in the delivery plan, to ensure they are enacted as effectively as possible.

Task and Finish Groups

WMCDAP continues to work towards increasing the number of Community Sentence Treatment Requirements awarded in sentencing, which is being led by Probation.

In addition, each local authority area has, and continues to develop, their own Local Drug Information System (LDIS) to share and assess drug information so that reports of new, potent or contaminated drugs can be shared and gathered from a range of sources, can be verified, and alerts and information sent to the right people. Each area is also developing a Preparedness Plan if drug-related overdoses and/or deaths rise in their local authority area.

In June 2025, there was a Multi-Agency Drug-Related Death Workshop which built on previous learning, to help produce a West Midlands Preparedness Plan should drug-related overdoses and/or deaths rise beyond one local authority area in the WMCDAP footprint. Following the workshop, the aim was to continue strengthening relationships between all partners; ensure intel sharing is regular and consistent across all relevant partners; and clarify escalation processes amongst all partners, to allow people to live their lives free from the harms associated with substance use.

As a result, four Task and Finish Groups were to be set up to address areas for improvement in current response frameworks:

1. Regional Consistency of LDIS Processes and Local Preparedness Plan
2. Toxicology
3. Information Sharing Agreement

4. Out of Hours Provision (should an incident happen outside of normal working hours)

The findings and actions arising from these groups will support the development of the West Midlands CDAP Preparedness Plan.

Local Partnership Progress and Good Practice

Birmingham

- Birmingham Drug and Alcohol Partnership (BDAP) Dashboard - Throughout 2025, the Addictions Team shared the 'BDAP Dashboard' with the members of the Birmingham Drug and Alcohol Partnership and made changes based on feedback. This dashboard has been a fantastic resource to display a range of drug and alcohol-related indicators, which measure outputs and outcomes related to the priority areas, and highlight areas of improvement and visualise risk.
- Deep Engagement Partners - Birmingham City Council's Deep Engagement Partners (DEPs) support the Council to tackle health inequalities in various communities across the city. As part of the programme, the DEPs run focus groups within their communities on the topics of health inequalities that affect their community. The Delicate Mind (Pakistani DEP) ran a focus group on Cannabis, and Centrala (Polish DEP) ran one on Alcohol. During a recent Birmingham Drug and Alcohol Partnership meeting, the two DEPs presented their findings to highlight potential areas of unmet need. Whilst Partners may have reached out to the DEPs privately, the Addictions Team are aware that CGL asked to connect with Centrala, as the Polish community is one that they would like to connect with further.
- BDAP's Reach - During 2025-2026, the Birmingham Drug and Alcohol Partnership reached a membership of over 70 people. The members were chief executive officers, directors, associate directors, heads of services and departments, criminal justice colleagues, primary care colleagues, VCSE colleagues, and many others.

Coventry

- The Enhanced Drug Rehabilitation Requirement/ Alcohol Treatment Requirement pilot project aims to increase the number of, and successful completion of, community treatment orders in Coventry. The pilot brings additionality through funding for structured counselling, peer mentor support and a diversionary activity fund to promote individual interests. Examples of diversionary fund use have been gym membership, swimming lessons, national trust membership – supporting service users to reintegrate into the community and promote long term recovery.
- In 2025, Coventry launched the 'Lunch and Learn Harm Reduction Monthly Forum'. The sessions are coordinated by Public Health in partnership with Positive Choices and CGL the local treatment services. Topics so far have included hidden harm, Novel Synthetic Opioids, LDIS, Alcohol and Ketamine. The sessions are aimed at professional working in the wider system. Some sessions have had over 50 attendees, many from Coventry social care teams.
- Last year Coventry commenced a pilot project in partnership with Coventry Coroners Service, enabling the team to work closely with and access information around those that have lost their life due to substance use and to understand the possible causes, substances being used and the demographics of those individuals. This in turn will allow for better identification of those most at risk. It is known that only a proportion of those dying from drug related deaths are in treatment, so this pilot will also identify Coventry's unmet need and therefore reach those people and ensure that treatment is accessible for those groups. Understanding the circumstances, areas of good practice

and learning from the cases may allow for further prevention across the system. The coroner and team have been extremely supportive of this project and the wider drug and alcohol agenda and have agreed to extend this project for a further year, resulting in widening the scope to look at alcohol related deaths too.

Dudley

- As a result of strong partnership working between the local treatment provider and feeder prisons, the continuity of care rates for Dudley are consistently exceeding local targets and are above the national average.
- The Dudley partnership have implemented actions from a self-assessment of local structures and processes that contribute to reductions in alcohol-related harm (using the CLear tool). For example, improving referral pathways and building stronger relationships between the Alcohol Care Team and treatment provider (and other partners), to improve treatment and recovery outcomes following hospital discharge.
- Trading Standards operate a regular test purchase scheme for underage sales of alcohol, tobacco and vapes, and proactively respond to complaints regarding underage sales and counterfeit/ illicit sales of alcohol, tobacco and vapes, with successful prosecutions and work with landlords to evict offenders.

Sandwell

- In Sandwell, during 2025 unmet need among people who use opiates and/or crack cocaine has reduced to 44.8% which is lower than the England average of 53.4%.
- Sandwell successfully commissioned a project to support the development of a Lived Experience Recovery Organisation (LERO) in Sandwell. The project brought together people with lived and living experience of drugs and alcohol who worked together to explore LERO models; develop early values, purpose and remit; identify needs, barriers and enablers; and produce a clear plan for next-stage development. Throughout 2026, Sandwell will implement their recommendations to develop an independent LERO, fostering genuine co-production and strengthening recovery across Sandwell.
- In 2025, DECCA, the young person's drug and alcohol service, delivered education and awareness sessions to over 22,000 young people across schools in Sandwell. At 15.9 per 100,000 population alcohol specific hospital admissions among young people in Sandwell are lower than the England average of 22.6. Substance misuse related admissions among Sandwell residents aged 15 to 24 are 40.0 per 100,000 compared to the England average of 47.4.

Solihull

- There is good governance and system leadership within the Solihull Combatting Drugs and Alcohol Board with good engagement, and four clearly defined working groups in place that feed up.
- In Solihull there is a strong recovery-oriented system of care being developed in a way that supports longer-term recovery and connection. The voice of lived experience is embedded and influential in provision of care.
- There is a good level of responsiveness to risks and changing needs. This is particularly within the children and young peoples' service, and the response to the emerging use of Ketamine and preventative approach adopted with delivery of exploitation and awareness sessions in schools.

Walsall

- The Walsall partnership have reinvigorated LDIS processes and successfully delivered a drug-related death and Naloxone partnership event in September. There was great attendance and engagement from a range of partners across Walsall.
- Within Walsall, there have been increased numbers receiving specialist treatment interventions.
- Walsall initiated a pilot with HMPPS to improve female offenders experience of Drug Rehabilitation Requirements and Alcohol Treatment Requirements.

Wolverhampton

- Wolverhampton Drug and Alcohol Strategic Partnership launched Specialist Support Navigator roles at New Cross Hospital, providing tailored support for individuals with complex needs from arrival through post-discharge, reducing repeat presentations to secondary care.
- The partnership established a Homeless Outreach Peer Engagement role, improving access to treatment for people experiencing homelessness and strengthening inclusive partnership approaches across the system.
- In addition, Wolverhampton implemented a specialist Dual Diagnosis Team, enhancing joint working with Black Country Healthcare through coordinated hospital in-reach, joint assessments, multi-disciplinary teams, Lived Experience Recovery Organisation peer support, and improved workforce training.

4 West Midlands Drug and Alcohol Data Insights

Strategic outcome 1: Reducing Drug Use

Table 1 illustrates estimates of OCU across the West Midlands for fiscal year 2022/23 and shows clear variation between local authorities. Birmingham has by far the highest estimated number of people using opiates and/or crack cocaine (10,864), alongside the highest rate at 14.2 per 1,000 population, reflecting the scale and concentration of drug use in the city. Wolverhampton also shows a comparatively high rate (11.8 per 1,000) with an estimated 2,020 users. Walsall's rate follows, with an estimated 2,076 users and a rate of 11.6 per 1,000. Coventry had an OCU rate of 9.4 per 1,000, with a larger estimate of 2,213 opiate and crack users. Dudley, Sandwell and Solihull have lower estimated numbers and rates, ranging from 7.1 to 8.4 per 1,000, indicating comparatively lower prevalence. Overall, the data highlights significant geographic differences in drug use prevalence.

Table 1 - Estimates of the number and rates of people using opiates and/or crack cocaine between April 2022 and March 2023, sourced from ONS.

Local authority	OCU estimate	OCU Rate per 1,000
Birmingham	10,864	14.2
Coventry	2,213	9.4
Dudley	1,514	7.5
Sandwell	1,870	8.4
Solihull	939	7.1
Walsall	2,076	11.6
Wolverhampton	2,020	11.8

Strategic outcome 2: Reducing Drug-Related Crime

Total Recorded Drug Offences

Drug offences are specific criminal activities involving the illegal possession and trafficking of controlled substances, as defined by laws such as the Misuse of Drugs Act 1971. This differs from drug-related because drug offences are specific home office offence classes.

In fiscal year 2024/25, there were 8,215 drug offences recorded across the West Midlands Police force area, marking a 10.2% increase from 2023/24 (7,450 drug offences).

Drugs Possession and Trafficking Offences

Table 2 displays the total number of recorded drug possession and trafficking offences across the WMP force area for the fiscal years 2023/24 and 2024/25. Drug possession offences increased from 5,521 in 2023/24 to 6,526 in 2024/25, a substantial 18.8% uplift. Contrastingly, recorded trafficking of drugs offences fell by 14.3%, from 1,929 offences to 1,654.

Table 2 - Total recorded drug possession and trafficking offences for fiscal years 2023/24 and 2024/25, sourced from WMP databases.

Offence Sub-class	2023/24	2024/25	% Change
Trafficking of Drugs	1,929	1,654	-14.3%
Possession of Drugs	5,521	6,562	+18.8%

Drugs Trafficking LPA Breakdown

Table 3 shows the total number of recorded drug trafficking offences per LPA for the fiscal years 2023/24 and 2024/25. Birmingham recorded the largest volume of drugs trafficking offences in fiscal year 2024/25, with 731 records, marking a minimal 2.4% decline. Coventry followed with 298 records in 2024/25, reducing by a substantial 33.3%, the largest reduction out of all LPAs. Wolverhampton (-24.0%) and Sandwell (-20.9%) also experienced substantive decline, with 146 and 174 records respectively in 2024/25. Walsall and Solihull had notably more minimal reductions in trafficking offences, with minimal changes in absolute numbers. Dudley's trafficking offences remained relatively unchanged, with a 1 record decline.

Table 3 - Total recorded drug trafficking offences for fiscal years 2023/24 and 2024/25, by LPA, sourced from WMP databases.

LPA	2023/24	2024/25	% Change
Birmingham	749	731	-2.4%
Coventry	447	298	-33.3%
Sandwell	220	174	-20.9%
Wolverhampton	192	146	-24.0%
Walsall	131	122	-6.9%
Dudley	112	111	-0.9%
Solihull	68	65	-4.4%

Drugs Possession LPA Breakdown

Table 4 illustrates the total number of recorded drug possession offences per LPA for the fiscal years 2023/24 and 2024/25. Birmingham recorded by far the largest volume of drugs possession offences in fiscal year 2024/25, with 3,417 records, marking a significant 28.3% increase, the largest rise in offences out of all LPAs. Sandwell followed with 685 records in 2024/25, increasing by 13.2%. Dudley (+22.6%) and Solihull (+21.3%) also experienced substantive inclines, with 467 and 325 records, respectively. Walsall and Wolverhampton both experienced increases in recorded possession offences, with a rise of 2.4% and 0.7%, the most minimal inclines compared to all other LPAs.

Table 4 - Total recorded drug possession offences for fiscal years 2023/24 and 2024/25, by LPA, sourced from WMP databases.

LPA	2023/24	2024/25	% Change
Birmingham	2,664	3,417	28.3%
Sandwell	605	685	13.2%
Coventry	604	653	8.1%
Wolverhampton	583	587	0.7%
Dudley	381	467	22.6%
Walsall	381	390	2.4%
Solihull	268	325	21.3%

Drug Offences Police Outcomes

A police outcome is the final status or action taken by police to resolve a recorded crime investigation; it categorises how a case is closed. A positive outcome refers to a recorded crime that is resolved through formal action (like charges or cautions) or informal action (like community resolutions), rather than plainly closing a case. Positive outcome proportion measures the percentage of recorded crimes that are resolved through formal actions.

Table 5 shows total outcomes, positive outcomes, and positive outcome proportion for the fiscal years 2023/24 and 2024/25. Total drug outcomes rose by 3.1% from 8,081 to 8,333. Over the same period, positive outcomes rose more sharply by 29.2%, from 4,377 to 5,657. As a result, positive outcome proportion increased to 67.9%, an improvement of 13.7 percentage points, indicating a higher proportion of recorded drug offences are being resolved through formal action.

Table 5 - Total drug offences outcomes for fiscal years 2023/24 and 2024/25, sourced from WMP databases.

	2023/24	2024/25	% Change
Total Outcomes	8,081	8,333	+3.1%
Positive Outcomes	4,377	5,657	+29.2%
Positive Outcome Proportion	54.2%	67.9%	+13.7 percentage Points

Drug Offences Positive Outcome Types

Table 6 displays the types of positive outcomes disposed in 2023/24 and 2024/25. There was a notable change in the types of positive outcomes delivered. Charges or summons increased by 42.6%, suggesting greater use of formal enforcement. Community resolutions fell substantially (-80.2%), while diversionary, educational, or intervention-based outcomes increased significantly (354.6%), indicating a shift toward alternative disposal methods. Adult cautions decreased by 56.1%, while youth cautions increased markedly. The rise in diversionary or educational intervention activity shows a move towards resolving drugs offences through out-of-court disposals.

Table 6 - Total drug offences positive outcomes, by type, for fiscal years 2023/24 and 2024/25, sourced from WMP databases.

Outcome Description	2023 /24	2024 / 25	% Change
Charge or summons	1,075	1,533	+42.6%
Caution – Adult	139	61	-56.1%
Community Resolution	3,154	624	-80.2%
Diversiónary, educational or intervention activity	130	591	+354.6%
Caution - Youth	9	188	+1988.9%

Trafficking of Drugs Outcomes

Table 7 shows total outcomes, positive outcomes, and positive outcome proportion for the fiscal years 2023/24 and 2024/25, for trafficking of drugs offences.

Total trafficking of drugs outcomes decreased between 2023/24 and 2024/25, coinciding with the reduction in offences recorded. Despite this reduction in volume, positive outcomes increased by 17.1%, rising from 530 to 621. Consequently, the positive outcome proportion improved from 28.9% to 38.2%, an increase of 9.3 percentage points, indicating improved investigative effectiveness and outcomes in trafficking offences.

Table 7 – Total trafficking of drug offences outcomes for fiscal years 2023/24 and 2024/25, sourced from WMP databases.

	2023/24	2024/25	% Change
Total Outcomes	1,832	1,624	-11.3%
Positive Outcomes	530	621	+17.1%
Positive Outcome Proportion	28.9%	38.2%	+9.3 percentage Points

Trafficking of Drugs Positive Outcome Types

Table 8 shows the types of positive outcomes disposed in 2023/24 and 2024/25 for trafficking of drugs offences. Charges or summons remain the predominant positive outcome type and increased by 30.0%, from 414 to 538, reflecting a greater use of punitive enforcement in trafficking cases. Adult cautions reduced by 17.9%, and community resolutions also declined from 76 to 50, a 32.2% reduction. Diversionary or educational outcomes remained low, with 4 dispersed in 2024/25. The data shows a clear shift towards stronger enforcement for trafficking of drugs offences evidenced by the rise in charges and summons and the reduction in out-of-court disposals.

Table 8 – Total trafficking of drug offences positive outcomes, by type, for fiscal years 2023/24 and 2024/25, sourced from WMP databases.

Outcome Description	2023/24	2024/25	% Change
Charge or summons	414	538	+30.0%
Caution – Adult	39	32	-17.9%
Community Resolution	76	50	-34.2%
Diversionary, educational or intervention activity	6	4	-33.3%
Caution - Youth	1	1	No change

Possession of Drugs Outcomes

Table 9 shows total outcomes, positive outcomes, and positive outcome proportion for the fiscal years 2023/24 and 2024/25, for possession of drugs offences. Total possession of drugs outcomes increased over the period, rising by 7.3% from 6,249 to 6,709. Positive outcomes increased more substantially by 30.9%, from 3,847 to 5,036. As a result, positive outcome proportion rose by 13.5 percentage points to 75.1%, indicating a much higher likelihood of recorded possession offences resulting in a positive outcome.

Table 9 – Total possession of drug offences outcomes for fiscal years 2023/24 and 2024/25, sourced from WMP databases.

	2023/24	2024/25	% Change
Total Outcomes	6,249	6,709	+7.3%
Positive Outcomes	3,847	5,036	+30.9%
Positive Outcome Proportion	61.6%	75.1%	+13.5 percentage Points

Possession of Drugs Positive Outcome Codes

Table 10 shows the types of positive outcomes disposed in 2023/24 and 2024/25 for possession of drugs offences. Charges or summons increased by 50.5%, reflecting greater use of formal enforcement for possession offences. Diversionary and educational interventions fell sharply by 54.5%, while community resolutions increased by 25.6%, possibly showing a shift in how cases previously managed through diversionary pathways are now being resolved via community resolution. Adult and youth cautions increased, though they remain comparatively low in volume.

Table 10 – Total possession of drug offences positive outcomes, by type, for fiscal years 2023/24 and 2024/25, sourced from WMP databases.

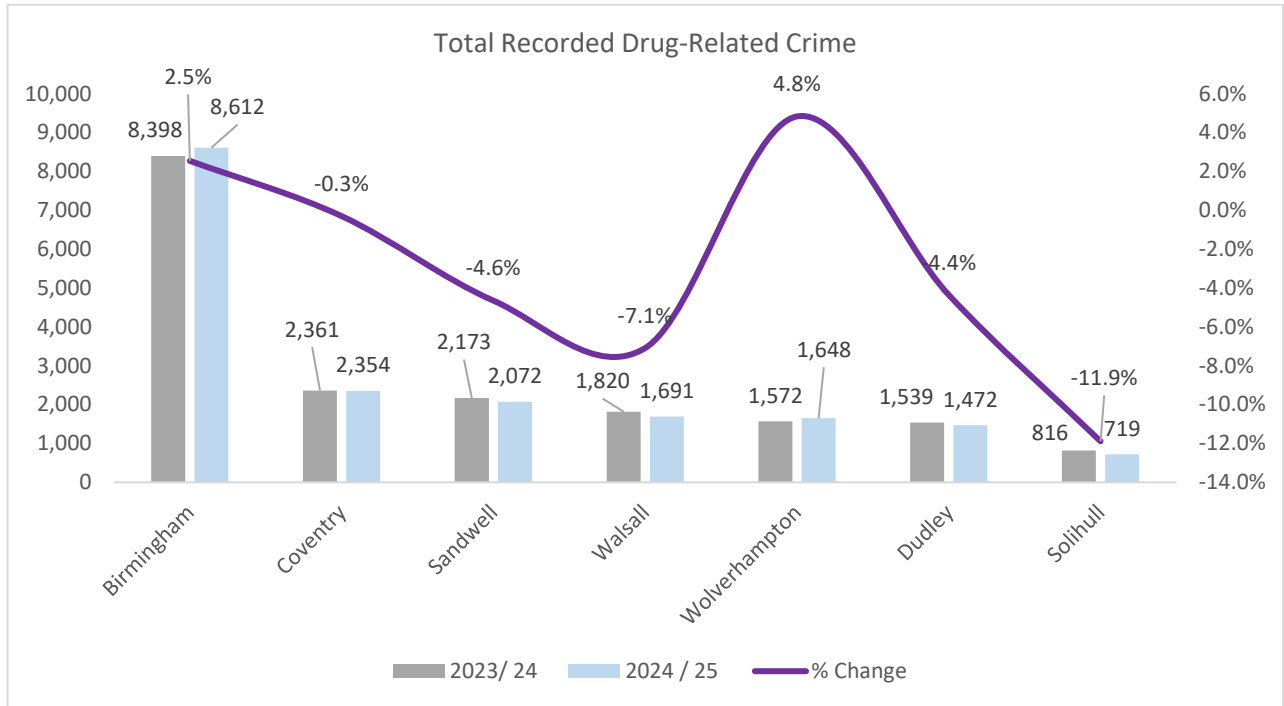
Outcome Description	2023/24	2024/25	% Change
Charge or summons	661	995	+50.5%
Community Resolution	3,078	3,865	+25.6%
Diversionary, educational or intervention activity	124	57	-54.5%
Caution – Adult	100	156	+56.0%
Caution - Youth	8	20	+150.0%

Drug-Related Crimes

Figure 1 illustrates the total number of recorded drug-related offences across WMP local policing areas (LPAs) for the fiscal years 2023/24 and 2024/25. A drug-related crime is recorded as such because it is flagged as drug-related on WMP systems, indicating that drugs were a relevant factor in the offence.

Across the whole WMP force area, there was a 20.9% reduction in drug-related total recorded crime falling from 18,679 in 2023/24 to 18,568 offences in 2024/25. Harm Score, a measure of how serious the offences recorded were, reduced by 8.1%. Birmingham accounts for by far the highest volume of offences in both fiscal years, with a slight 2.5% increase from 8,398 to 8,612. The largest increase was a 4.8% rise in Wolverhampton, from 1,572 to 1,648 drug-related crimes. Sandwell (-4.6%) and Dudley (-4.4%) show modest reductions in drug-related crime. Walsall shows a substantial decline in drug-related crimes going from 1,820 in fiscal year 2023/24, to 1,691 in fiscal year 2024/25, marking a 7.1% decrease. However, Solihull experienced the largest decline out of all LPAs, with an 11.9% reduction, going from 816 drug-related crimes to 719.

Figure 1 - Total recorded drug-related offences for fiscal years 2023/24 and 2024/25, sourced from WMP databases.

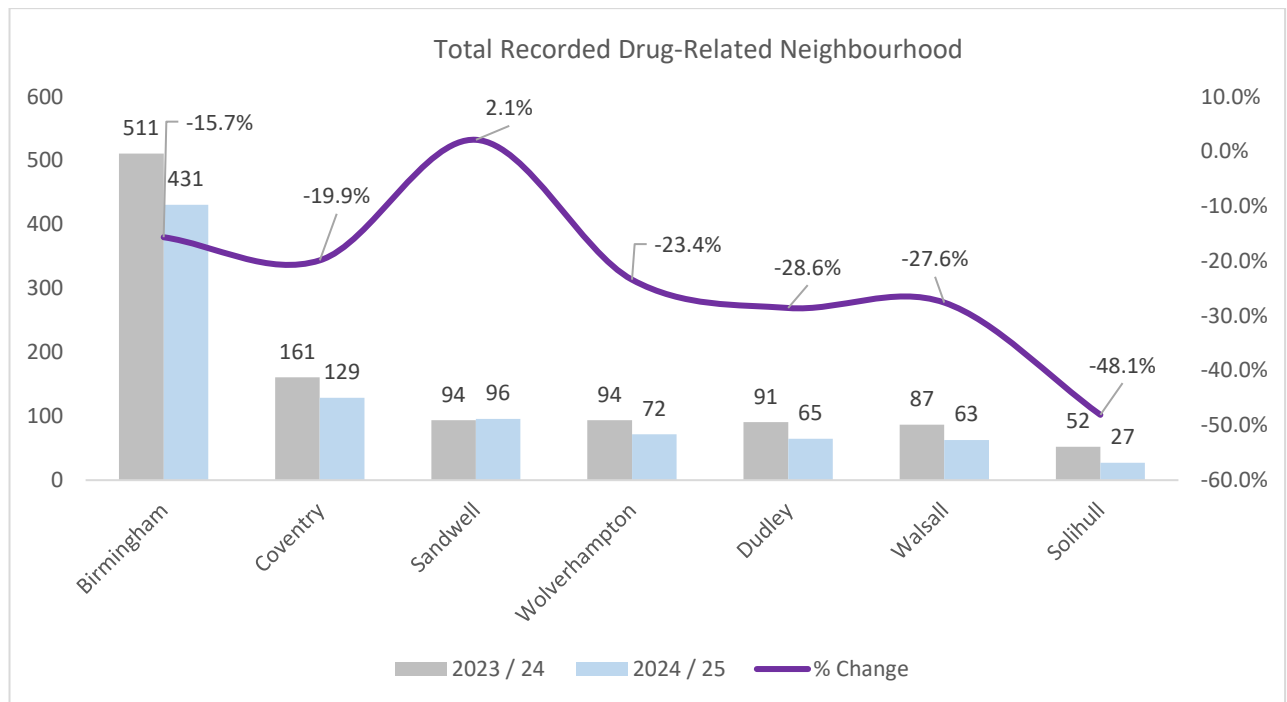


Drug-Related Neighbourhood Crimes

Figure 2 shows the total number of recorded drug-related Neighbourhood Crime across the WMP LPAs for the fiscal years 2023/24 and 2024/25. Neighbourhood crime refers to a category of offences that typically occur within local communities and impact residents' sense of safety. It is made up of the following offence sub-classes: Theft or Unauthorised Taking of a Motor Vehicle, Theft from a Vehicle, Residential Burglary of a Home, Robbery of Personal Property, interfering with a Motor Vehicle, Theft from the Person, Residential Burglary of an Unconnected Building, and Aggravated Vehicle Taking. A drug-related neighbourhood crime is recorded as such because it is one of the above offences flagged as drug-related on WMP systems.

There were 887 drug-related neighbourhood crimes recorded in 2024/25, marking a 19.1% reduction in comparison to 2023/24 (1,096). Most LPAs experienced notable reduction in drug-related neighbourhood crimes year on year. Birmingham recorded the highest volume overall, decreasing from 511 to 431, a reduction of 15.7%. Solihull saw the largest proportional decrease at 48.1%, falling from 52 to 27. Coventry, Wolverhampton, Dudley, and Walsall also recorded notable declines of between 19.9% and 28.6%, indicating a consistent downward trend in neighbourhood drug-related crimes across the region. Despite this, Sandwell experienced a minimal 2.1% increase in offences, a 2-offence rise. Overall, the data suggests meaningful reductions across the WMP force area, despite Sandwell's marginal rise.

Figure 2 - Total recorded drug-related neighbourhood crimes for fiscal years 2023/24 and 2024/25, sourced from WMP databases.



Drug-Related Homicides

In 2024/25, 12.5% of homicides recorded by WMP were linked to drugs, marking an 8-percentage point increase compared to 2023/24.

Strategic outcome 3: Drug-Related Deaths and Harm

Table 11 outlines the total number of deaths related to drug misuse across the seven local authority areas in the West Midlands registered in calendar years 2024 and 2023. The data in this section was sourced from ONS and covers the calendar years 2023 (January 1st, 2023– December 31st, 2023) and 2024 (January 1st, 2024 – December 31st, 2024). The data is the total number of deaths registered related to drug poisoning in the West Midlands Metropolitan County.

Statistics on deaths related to drug poisoning are based on the year in which the death was registered. This is because of lengthy delays between the date these deaths occur and the date they are registered and received by the ONS. The time lag is also dependent on inquest times.

The total number of registered drug-related deaths across the West Midlands declined over the two-year period. In 2023, there were 295 registered deaths, this fell to 262 in 2024, a reduction of 11.2% (-33 deaths).

Table 11 - The total number of registered drug-related deaths across the West Midlands Metropolitan County for 2023 and 2024, sourced from ONS.

	2023	2024	% Change
Total Deaths Registered	295	262	-11.2%

Overall drug-related deaths across the West Midlands declined between 2023 and 2024, with variation across local authority areas. Table 12 illustrates drug-related deaths per local authority area. Sandwell experienced the largest proportional decline of 23.5%, with registered deaths falling from 17 to 13. Birmingham saw the largest numerical fall, from 152 to 120, marking a 21.2% decline in registered deaths across the period. Deaths in Wolverhampton declined from 38 to 30, a 21.1% decline. Dudley experienced a 25% increase in registered deaths, rising to 25 in 2024. Registered deaths in Coventry also increased, from 37 to 43, marking a 12.2% uplift. Both Solihull and Walsall registered deaths remained unchanged in both years, stable at 11 and 20 registered deaths.

Table 12 - The total number of registered drug-related deaths per Local Authority Area for 2023 and 2024.

Local Authority Area	2023	2024	% Change
Birmingham	152	120	-21.1%
Coventry	37	43	+16.2%
Dudley	20	25	+25.0%
Sandwell	17	13	-23.5%
Solihull	11	11	0.0%
Walsall	20	20	0.0%
Wolverhampton	38	30	-21.1%

Intermediate outcome 1: Reducing Drug Supply

Due to data availability, the data within this section is solely fiscal year 2024/25. In fiscal year 2024/25, there was sustained effort to reduce drug supply across the West Midlands, with numerous policing operations resulting in:

- 308 county lines closed through the County Lines Programme.
- 6 major drug disruptions and 15 moderate disruptions.
- 21.12 kilograms of illegal substances seized.
- 4 Total National Referral Mechanism referrals (county lines flagged).

These results demonstrate significant effort to reducing the supply of drugs in fiscal year 2024/25, through continued enforcement activity, targeted operational policing, and partnership working.

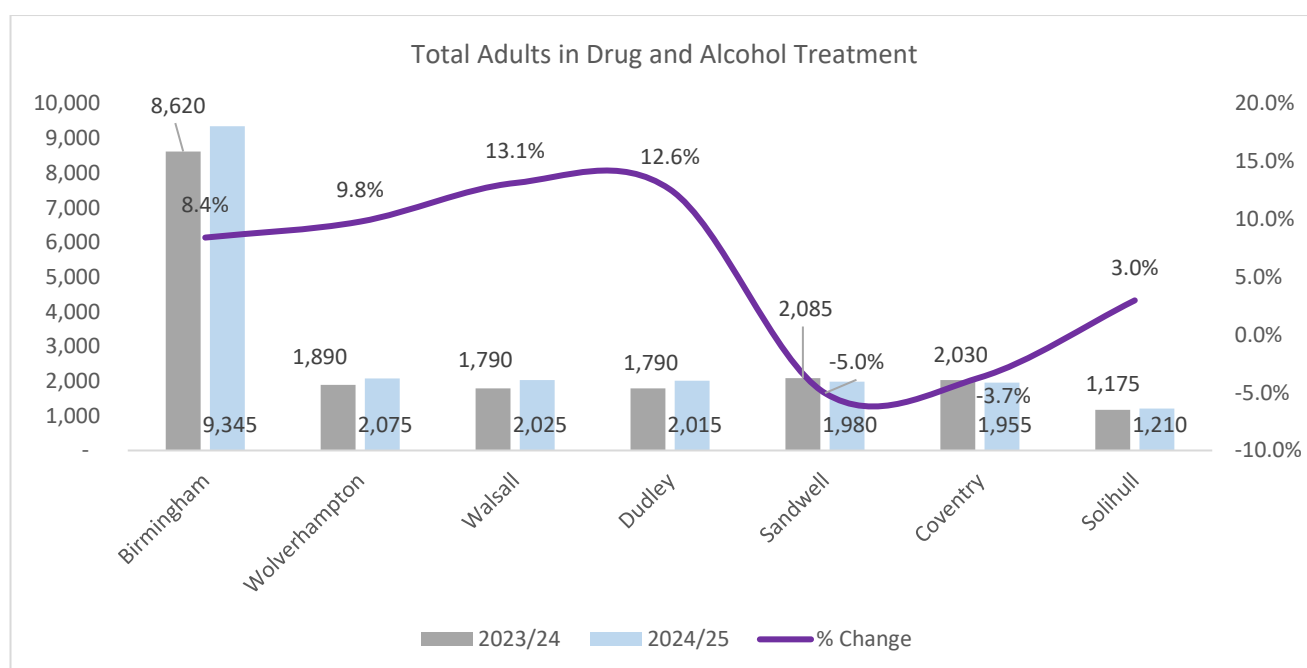
Intermediate outcome 2: Increasing Engagement in Drug Treatment

Figure 3 illustrates the total number of adults receiving treatment across the seven local authority areas in the West Midlands in fiscal years 2024/25 and 2023/24, alongside the percentage change between the years. These figures include individuals in treatment for opiate use, non-opiate use, combined non-opiate

and alcohol use, and alcohol use alone. Birmingham by far had the highest volume of adults in treatment, with 9,345 in fiscal year 2024/25, reflecting the larger size and population of the area. Followed by Wolverhampton, Walsall, and Dudley with around 2,000 individuals in treatment for 2024/25. Sandwell and Coventry were towards the lower end of the distribution across the region, with 1,955 and 1,980 individuals, respectively. Solihull had the lowest number of adults receiving treatment, with 1,210 for fiscal year 2024/25, substantially lower than all other local authority areas.

Looking at the change from the previous fiscal year (2023/24), Birmingham (+8.4%), Wolverhampton (+9.8%), Walsall (+13.1%), and Dudley (+12.6%) all recorded significant increases in the number of individuals in treatment, with Walsall and Dudley showing the largest percentage growth. Solihull experienced a modest rise of 3.0%, while Sandwell (-5.0%) and Coventry (-3.7%) reported declines in the number of individuals receiving treatment. Overall, this reflects a mixed picture across the region, with some areas seeing an increase in engagement and others experiencing declines.

Figure 3 – Total Adults in Drug and Alcohol Treatment for fiscal years 2023/24 and 2024/25, sourced from NDTMS.



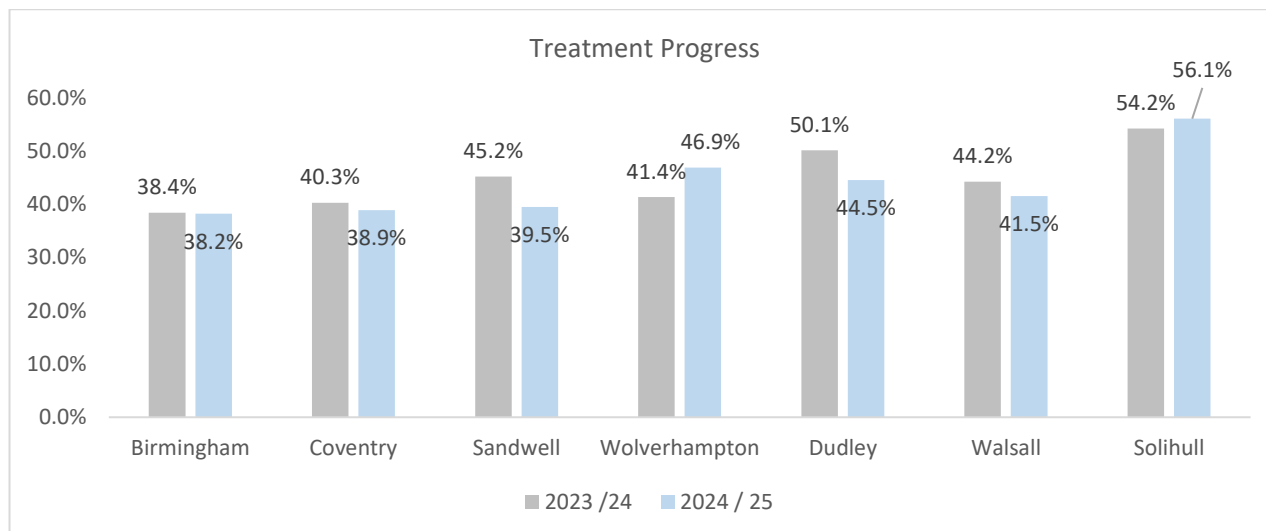
Intermediate outcome 3: Improving Drug Recovery Outcomes

Treatment Progress

Figure 4 shows Treatment Progress as the proportion of individuals in treatment who have demonstrated substantial progress by either completing the treatment programme or remaining in treatment while not using substances or having substantially reduced their substance use, for fiscal years 2023/24 and 2024/25.

Only Solihull and Wolverhampton demonstrate an improvement in the proportion of individuals making substantial progress, with Solihull recording the highest overall rate, with 56.1% of individuals progressing through treatment in 2024/25 and Wolverhampton showing a clear 5 percentage point year-on-year increase. In contrast, Birmingham, Coventry, Sandwell, Dudley, and Walsall all show reductions in treatment progress compared to the previous year. Overall, the data highlights mixed performance across the region, with improvements limited to two areas and declining treatment progress observed elsewhere.

Figure 4 – Treatment Progress of individuals receiving Drug and Alcohol Treatment for fiscal years 2023/24 and 2024/25, sourced from NDTMS.



Supporting Measures: Alcohol Additional Outcomes

Alcohol Dependency

Table 13 illustrates estimates of alcohol dependency across the West Midlands for fiscal year 2019/20 and shows clear variation between local authorities. Birmingham has by far the highest estimated number of alcohol dependent people with 13,346 estimated, with a relatively mid-range rate of 15.7 per 1,000. Looking at dependency rates per 1,000, Wolverhampton shows the highest rate (18.3 per 1,000) with an estimated 3,691 users. Coventry's rate follows, with a rate of 18.1 dependents per 1,000 and 5,298 individuals estimated to be alcohol dependent. Sandwell had an OCU rate of 17.5 per 1,000, with a larger estimate of 4,322 alcohol dependents. Dudley, Walsall and Solihull have lower estimated numbers and rates, ranging from 10.9 to 15.5 per 1,000, indicating comparatively lower dependence. Overall, the data highlights significant geographic differences in alcohol dependency.

Table 13 - Estimates of the number and rates of alcohol dependency between April 2019 and March 2020, sourced from ONS.

Local authority	Estimates of Alcohol Dependency	Dependency Rate per 1,000
Birmingham	13,456	15.7
Coventry	5,298	18.1
Dudley	3,718	14.7
Sandwell	4,322	17.5
Solihull	1,841	10.9
Walsall	3,346	15.5
Wolverhampton	3,691	18.3

Reducing Alcohol-specific Deaths

The data in this section was sourced from ONS and covers the calendar years 2022 (January 1st, 2022–December 31st, 2022) and 2023 (January 1st, 2023 – December 31st, 2023). The data is the total number of deaths registered related to alcohol in the West Midlands Metropolitan County.

Alcohol-specific deaths only include those health conditions where each death is a direct consequence of alcohol, such as alcoholic liver disease.

Across the West Midlands, registered alcohol-specific deaths declined marginally over the two-year period, falling from 507 in 2022 to 503 in 2024 (0.8%).

Table 14 - The total number of registered alcohol-related deaths across the West Midlands Metropolitan County for 2022 and 2023, sourced from ONS.

	2022	2023	% Change
Total Deaths Registered	507	503	-0.8%

Although alcohol-specific deaths across the West Midlands Metropolitan County changed very little overall. Notable variation is evident between individual local authority areas. Table 15 shows alcohol-related deaths per local authority area. Birmingham recorded the largest increase in registered alcohol-specific deaths, rising from 177 deaths in 2022, to 199 in 2023 (+12.4%), contributing significantly to the regional total. Coventry and Walsall saw no change over the period, remaining at 57 and 42 deaths, respectively. Dudley experienced a decrease from 69 to 61 deaths (-10.3%). Sandwell also recorded a reduction, falling from 72 to 59 deaths (-18.1%). Solihull showed the largest proportional decrease, dropping from 35 to 27 deaths (-22.9%). Wolverhampton saw a slight increase from 56 deaths to 58 deaths, a small relative change.

Table 15 - The total number of registered alcohol-related deaths per local authority area for 2022 and 2023, sourced from ONS.

Local Authority Area	2022	2023	% Change
Birmingham	177	199	+12.4%
Coventry	57	57	0.0%
Dudley	68	61	-10.3%
Sandwell	72	59	-18.1%
Solihull	35	27	-22.9%
Walsall	42	42	0.0%

Conclusion

Overall, the findings indicate positive progress in several key areas during 2024/25. There has been a substantial reduction in total recorded drug-related crime, including a notable fall in drug-related neighbourhood crime, reflecting effective operational policing and focused county lines activity. This is complemented by clear improvements in drug offences outcomes, with increases in both the volume and proportion of positive outcomes across possession and trafficking offences, indicating a greater likelihood

of recorded offences resulting in meaningful actions and getting dealt with out-of-court. Collectively, these approaches have contributed to a force-wide reduction in drug-related deaths and an increase in the number of individuals accessing drug and alcohol treatment, demonstrating the impact of enforcement and early intervention.

Alcohol-related deaths across the force area have remained stable during the reporting period, suggesting that while significant challenges remain in relation to alcohol dependency, existing partnership prevention activity mitigates rising levels of mortality. However, the increase in drug-related homicide and mixed performance in drug treatment outcomes highlight ongoing challenges and areas requiring continued focus.

Taken together, the results demonstrate sustained effort and impact across enforcement and treatment, while reinforcing the need for continued partnership working to address remaining risks and areas for improvement.