



west midlands
police and crime
commissioner

VICTIMS STRATEGY

2025-2029

Contents

Foreword

Simon Foster - West Midlands Police and Crime Commissioner	3
Natalie Queiroz MBE - West Midlands Victims Advocate	4

Introduction	5
---------------------	----------

Victims Code of Practice	10
---------------------------------	-----------

Violence Against Women and Girls (VAWG)	12
--	-----------

Sexual Assault and Abuse	13
Domestic Abuse	14
Stalking	16
Hidden Harmful Practices	17
Women in Criminal Justice	19

Hate Crime	20
-------------------	-----------

Exploitation and Abuse	21
-------------------------------	-----------

Serious and Organised Crime	23
-----------------------------	----





Foreword

The rights and welfare of victims and survivors must always be at the forefront of policing and the wider criminal justice system. Every victim and survivor of crime is entitled to be seen, heard and supported, no matter who they are or where they come from. Crime does not discriminate. It affects individuals, families, and entire communities, leaving behind physical and emotional scars and disrupting lives.

This strategy marks a resolute commitment to putting victims and survivors at the heart of our justice system. It is built on the principles of compassion, empowerment, and inclusivity, recognising the diverse needs of the communities of the West Midlands region.

Policing and criminal justice agencies are failing to comply with the Victims Code of Practice. It must be complied with. I am making compliance with the rights set out in the Code a core part of this strategy.

By forging innovative partnerships, improving accessibility to resources, and holding the Criminal Justice System to account, this strategy seeks to ensure that every victim and survivor receives the care and support they need to rebuild their lives. I was the first PCC in the country to appoint a dedicated Victims Advocate.

The delivery of this strategy represents a shared responsibility: uniting communities, organisations, and partners to support victims and survivors at every stage of their journey, through the criminal justice system and beyond. It is grounded in compassion, driven by innovation, and strengthened through collaboration.

The West Midlands is a region celebrated for its diversity, and this strategy embraces both the unique challenges and opportunities that come with serving such a vibrant population. By focusing on amplifying victim – survivor voices and driving meaningful change, this strategy aims to ensure access to justice, empower victims and survivors and enable healing and recovery.

This strategy is underpinned by principles of anti-racism, trauma-informed care, procedural justice and culturally sensitive understanding, demonstrating an unwavering commitment to victim-centred approaches.

It should be considered alongside my **West Midlands Police and Crime Plan 2025-2029**, in which I have outlined my strategic priorities for policing, crime, community safety and criminal justice. It functions as a key mechanism for bringing these priorities to life and provides a clear framework for how we, as a region, will collaborate to deliver on them, for the benefit of the people and communities of the West Midlands.

Simon Foster

West Midlands Police and Crime Commissioner



Foreword

‘Nobody chooses to be a victim. Victims are not born but made through the actions of a person or a circumstance. Victims need understanding, support and empathy. Victims need empowerment. And equally importantly, victims need justice.’

Every victim and survivor of every crime has a right to full access to justice. They have a right to feel safe and empowered to report their crime, to be kept informed of the justice process and importantly have the right to be supported on their recovery journey. This is regardless of age, gender identity, race, cultural background, financial circumstance or locality.

I’m proud to live in a region as diverse as the West Midlands and I want to ensure that every person in our region has the knowledge that should they become a victim of crime they feel safe and supported to report that crime, knowing they will receive the best support and outcome possible and that all barriers to justice will be overcome.

The Victims Code of Practice sets out 12 fundamental principles - ‘Rights’ - which every victim of crime is entitled to receive. They are the basic steps in the criminal justice process which not only the Police need to follow but also the Crown Prosecution Service (CPS), the Courts (HMCTS) and the Probation Service (HMPPS) to ensure justice where possible can be realised. Justice goes beyond an offender being brought to conviction. Justice is about the victim feeling seen, heard, believed and supported throughout the process and beyond.

Ensuring we have a wide range of victim support services is also critical in this process. We are proud to have a diverse range of support services for our victims in the West Midlands, including our specialist ‘by and for’ services – run by our specific communities for those specific communities, whom have the greatest understanding of that communities’ needs.

Alongside Simon Foster, our Police and Crime Commissioner, I aim to hold all criminal justice agencies to account in relation to victims’ rights being upheld, be the victim voice and drive for positive change where needed.

This Victims’ Strategy lays out our approach to the following areas of criminality: Violence Against Women and Girls (VAWG) - including Sexual Assault and Rape, Domestic Abuse, Stalking, Hidden Harmful Practices and our approach to supporting Women in the Criminal Justice System; Hate Crime, and Serious and Organised Crime and Exploitation – including Modern Slavery. From intervention and prevention, care and support, through to criminal justice and enforcement, all within the frame of equality and awareness of intersectionality and cultural competence.

Together we can ensure that victims receive the ‘justice’ and support they deserve.

Natalie Queiroz MBE

West Midlands Victims Advocate



Introduction

The West Midlands Victims Strategy 2025-2029 articulates an ambitious vision for delivering high-quality support services to all those who need them, regardless of the crime type. It is firmly rooted in a commitment to reducing the harm caused by crime through preventative measures and collaborative partnerships. In addition, it seeks to ensure that victim-survivors can access justice should they choose to pursue a criminal justice outcome. The strategy will drive the overarching priorities committed to within the **West Midlands Police and Crime Plan (2025 – 2029)** in relation to victim-survivors of crime.

This strategy has been shaped through the comprehensive regional public consultation on the development of the Police and Crime Plan (2025 – 2029). The consultation adopted a multi-method approach to ensure inclusivity and robust engagement across all sections of society:

- A survey was conducted to collect quantitative and qualitative data on residents' perceptions, concerns and priorities.
- In-person events were held across the region to allow stakeholders to engage with the Police and Crime Commissioner and representatives from his office.
- Targeted focus groups were held to discuss complex issues in greater depth, providing nuanced insights that might not have been captured through broader consultation methods.

The insights gathered through this consultation in relation to victim-survivors have been grouped into five key thematic areas in the Police and Crime Plan (2025–2029). These themes reflect the most prominent concerns raised by stakeholders across the region.



Victims Rights & Welfare

This strategy is underpinned by the **Code of Practice for Victims** (Victims Code), which sets out the minimum standards of service victims should receive. The Victims and Prisoners Act 2024 strengthens this framework by enshrining the 12 rights of victims in law.

Consultation feedback highlighted ongoing challenges in awareness, accessibility, and trust. Victim-survivors expressed concerns about communication (particularly the accuracy of contact details and reliance on automated messaging) which can lead to feelings of disconnection. A more personalised, responsive approach was strongly advocated. Participants also emphasised the need for inclusive support services, noting barriers faced by elderly individuals, LGBTQ+ communities, disabled people, and non-English speakers. Suggestions included anonymous engagement options and tailored support for those not ready to report a crime.

These insights align with findings from external research, including work by **Baroness Newlove** (former national victims commissioner) and Victim Support, reinforcing the need for empathetic, transparent, and accessible services.

Access to Justice

Access to justice is not just about legal outcomes - it's about how victim-survivors are treated throughout the process. This strategy ensures victims feel heard, respected, and supported throughout their journey in the criminal justice system.

- **Procedural Justice (PJ)** focuses on fairness in how decisions are made - not just outcomes. It builds trust by treating victims with dignity and involving them meaningfully in the process.
- Victim feedback is essential to improving services. Mechanisms like satisfaction surveys, complaints, and **Victims' Code reviews** help shape a more responsive and transparent system. The **Victims Commission** ensures lived experience informs decision-making.
- Victims must be informed of **Restorative Justice (RJ)** options within days of reporting. RJ is voluntary and can support recovery by allowing victims to express the impact of crime. It's not suitable for all cases, especially where safety risks exist, and must be carefully assessed
- **Specialist advocates** (IDVAs, ISVAs, ISACs, IMSAs) provide expert guidance and emotional support, helping victims navigate the system whether or not they report to police.

“Policing and Criminal Justice agencies are failing to comply with the Victims Code of Practice. It must be complied with. I am making compliance with these rights a core part of my plan.”

PCC Simon Foster

“It is deeply regrettable that the criminal justice system often re-traumatizes victims, compounding their suffering and creating barriers to healing and justice.”

PCC Simon Foster

“In order to best support victims navigating their recovery journey, it is fundamental to have services with highly qualified, trauma-focussed and knowledgeable support workers who can effectively guide and empower our victims at this very challenging time”

*Victims Advocate
Natalie Queiroz MBE*

High-Quality Support Services for Victims

This strategy places victims at the centre of support services, ensuring they receive high-quality, accessible care whenever they seek help. It promotes a collaborative, multi-agency approach across the West Midlands, with police and criminal justice partners responsible for informing victims and survivors of their rights and facilitating access to support.

Consistency in specialist services and clear definitions of quality are essential to building a trusted and effective system. However, funding remains a significant challenge. The PCC has called for multi-year funding, streamlined budget processes, and strategic investment to stabilise and grow services.

Commissioning will be guided by the **Victim Services Commissioning Guidance 2024** and underpinned by four principles: victim-centred design, whole-system collaboration, equitable access, and clear evaluation mechanisms. The West Midlands DA/SAA Commissioning Subgroup and the **Victims and Prisoners Act 2024** duties will ensure resources are coordinated and targeted. Through platforms like the Victims Commission, the PCC will continue to improve services based on victim feedback and strategic needs assessments.

Supporting ‘By and For’ Specialist Services

Despite their proven impact, ‘by and for’ services remain underfunded and at risk due to short-term commissioning and systemic inequalities. Sustained investment, clear definitions in funding strategies, and equitable commissioning are essential to protect and expand these services.

Consultation feedback and national reports highlight strong demand for community-led support and the need for institutional reform. Victims called for mandatory VAWG training by specialist providers, improved transparency, and trauma-informed and anti-racist policing to rebuild trust.

Amplifying Victims Voices

Amplifying the voices of victim-survivors is essential to ensuring that West Midlands Police, the wider criminal justice system (CJS), and support services are truly victim-centred. When victim-survivors are heard, their experiences shape policy, funding, and service design, helping to remove barriers to reporting, engagement, and access. This also challenges harmful stereotypes and promotes dignity, respect, and fairness.

Victim-survivors emphasised the need for tailored support and inclusive communication, noting that factors like poverty, age, and scepticism can limit access to digital tools. Police must maintain diverse engagement channels and ensure training includes direct input from victims.

The PCC’s call for evidence highlighted the need for faster response times, improved care, and better accessibility. Recommendations included a dedicated Victim Response Task Force and a secure digital platform offering real-time case updates, encrypted communication, and access to support services.

“Individuals with lived experience of specific crimes are particularly well placed to support others who have faced similar offences”
PCC Simon Foster

“Our diverse communities have their own specific experiences of harms and life experiences which must be considered and supported, hence the absolute need for support services led by people of those communities.”
Victims Advocate
Natalie Queiroz MBE

“The only way we can know where the CJS pathway is doing well, not so well and where change needs to happen is to understand the journey through the diverse experience of those who have been through it.”
Victims Advocate
Natalie Queiroz MBE

This strategy is underpinned by the Freedom from **Violence and Abuse: A Cross Government Strategy to Build A Safer Society for Women and Girls 2025**, **Victims and Prisoners Act 2024**, **Domestic Abuse Act 2021**, **National Victims Strategy 2018**, **Tackling Violence Against Women and Girls Strategy 2021**, **Tackling Domestic Abuse Plan 2022** and **Victim Services Commissioning Guidance 2024**. It also acknowledges the recently published Independent Domestic Violence Advisor (IDVA) and Independent Sexual Violence Advisor (ISVA) **Statutory Guidance (2025)**.

Throughout this strategy, the term victim-survivor is used to refer to individuals who have experienced VAWG, volume crime, hate crime, serious and organised crime, or exploitation. This terminology recognises the diversity of personal experiences and respects the fact that individuals may identify differently. Using victim-survivor aims to be inclusive and avoid imposing language that may not reflect how someone sees themselves.

Partnerships: Governance and Multi-Agency Delivery

To deliver this strategy, effective partnership working is essential in providing holistic, meaningful support to victim-survivors. A multi-agency approach ensures victim-survivors receive emotional, legal, and practical support, while also enabling early intervention and prevention. By working together, organisations can share resources, improve communication, and streamline services, creating a more responsive and accessible system.

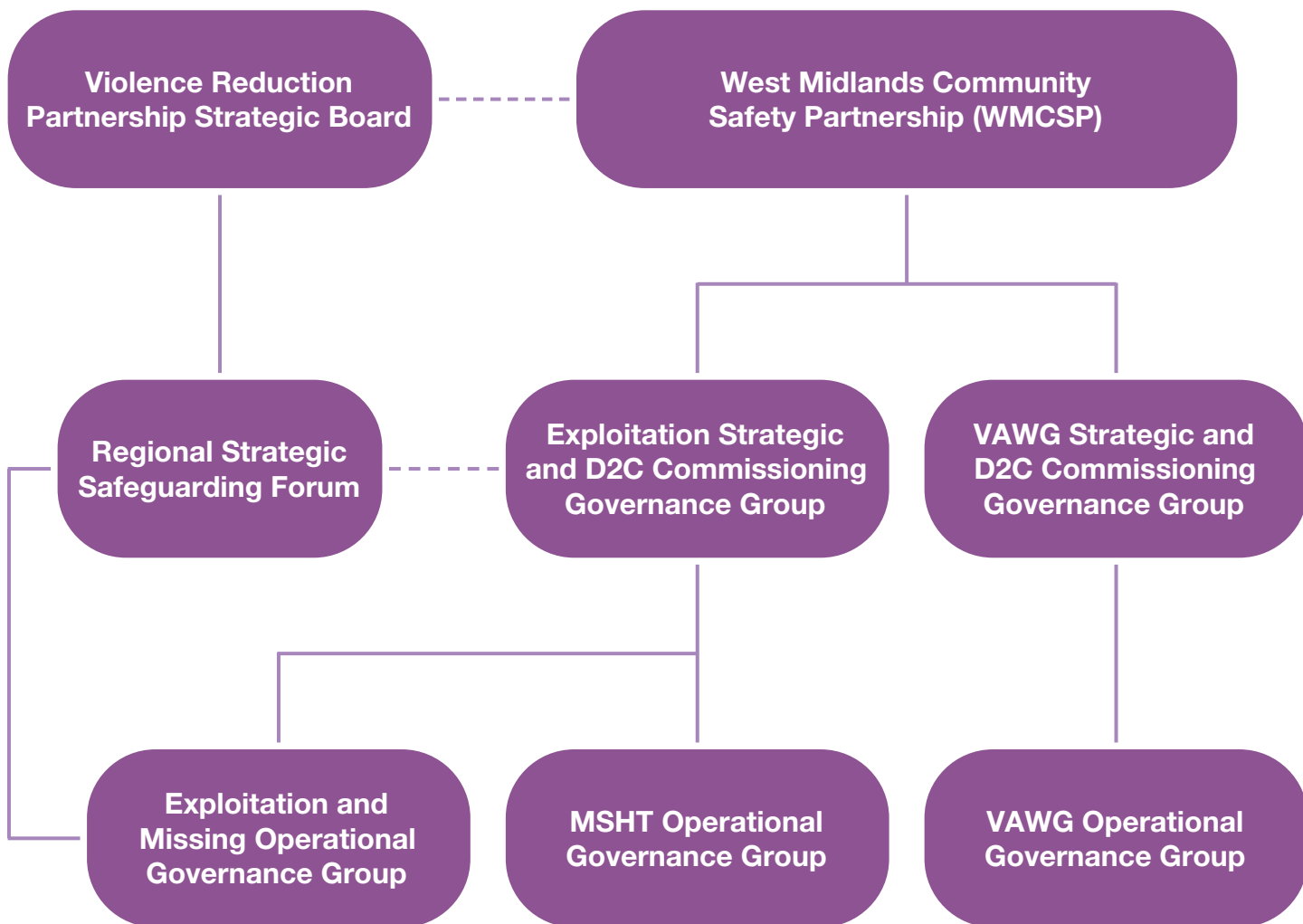
This strategy demonstrates a strong commitment to innovation through collaboration, with initiatives like the Victims Commission bringing together expertise to shape policy and improve services. Since 2020, four regional boards - Domestic Abuse (DA), Sexual Assault and Abuse (SAA), Modern Slavery and Human Trafficking (MSHT) and Exploitation and Missing (EM) - have worked under a shared governance model to address exploitation and abuse across the West Midlands. These thematic areas have been guided by 5 overarching pillars promoting a public health approach to tackling these issues;

1. Building strong foundations
2. Intervention and prevention
3. Care and support
4. Enforcement and criminal justice
5. Equality, intersectionality, and cultural competence

A new governance model has been implemented to ensure better alignment with national priorities to drive forward responsibilities as outlined in the Victims and Prisoners Act, the Home Office Modern Slavery Action Plan 2025 and the Freedom from Violence and Abuse Strategy 2025. This new governance model will be aligned to the Local Criminal Justice Board and West Midlands Community Safety Partnership.

The PCCs Accountability and Governance Board will continue to hold WMP to account for the role it must fulfil, as we continue to work together to tackle these issues. Success of the strategy will be measured by increased compliance with the Victims' Code of Practice across the criminal justice system, improvement in victim satisfaction with the police and the continued commissioning of high-quality support services for victims. These metrics form part of those being measured, as part of the overall Police and Crime Plan 2025-2029.

New structure



Full structure has links to:

- WMPCC Victims Commission
- WM Heads of Community Safety meeting
- WM Regional Strategic Safeguarding Forum
- WM Local Criminal Justice Board
- WM Victims and Witnesses Delivery Group

N.B. Strategic and Commissioning Groups to meet quarterly.

Operational Governance Groups to meet bi-monthly.



Victims Code of Practice

12 Rights

1 To be able to understand and to be understood



2 To have the details of the crime recorded without unjustified delay



3 To be provided with **information when reporting the crime**

4 To be referred to services that support victims and have services and support **tailored to your needs**



5 To be provided with information about compensation



6 To be provided with information about the investigation and prosecution



7 To make a victim personal statement



8 To be given information about **the trial, trial process and your role as a witness**

9 To be given information about the **outcome of the case and any appeals**



10 To be paid expenses and have property returned



11 To be given **information about the offender following a conviction**



12 To make a complaint about your rights not being met

Introduction

Being the victim of a crime can be an extremely traumatic experience. Such trauma is likely to affect almost every aspect of a person's life; from the ability to go outside, to the ability to feel safe in their own home.

All criminal justice agencies have a duty to ensure victims are treated with the dignity and respect they are entitled to. The Code of Practice for Victims, commonly known as the Victims Code is the statutory code which sets out the minimum level of service that victims should receive from the criminal justice system.

Key entitlements under the Victims' Code include the right to be kept informed about case progression; make a Victim Personal Statement (VPS) to explain the impact of the crime; be referred to victim support services; apply for compensation; and apply for special measures in court. The Code aims to transform the criminal justice system by putting victims first, making the system more responsive and easier to navigate.

The Victims and Prisoners Act 2024 represents a significant step forward in reinforcing the rights of victims within the Criminal Justice System (CJS). By legally enshrining the 12 rights of the Victims' Code of Practice into legislation, the Act seeks to ensure consistent delivery and greater accountability across agencies.

The Act introduces a duty for criminal justice bodies and Police and Crime Commissioners (PCCs) to monitor compliance with the Code, allowing for better tracking and reporting on how victim rights are upheld. The Local Criminal Justice Board (LCJB) plays a crucial role in maintaining oversight, holding justice partners accountable for meeting compliance standards.

Awareness of the code

There remains a critical gap in awareness and accessibility regarding the Victims Code. According to a survey carried out by the National Victims Commissioner in 2023 there is limited recognition of the code among victims—especially amongst people who have reported crimes, suggesting that more proactive measures are needed to ensure that individuals receive the full support they are entitled to.

Nationally, the low percentage of victims offered the opportunity to make a Victims Personal Statement (VPS) further underscores the need for more effective action, to ensure awareness and compliance. While more victims are given this chance as cases progress, the fact that nearly 40% of victims in court do not receive this opportunity, suggests failings and inconsistencies in practice.

In addition to the above national findings, the locally funded Victim Support charity conducted a similar independent survey in 2023¹, to understand the experience of victims with West Midlands Police. Of the 83 victims who participated in the survey; most victims were either very unsatisfied or somewhat unsatisfied with their overall experience. 66.7% were very unsatisfied or unsatisfied, with just 24.1% being very satisfied or satisfied.

People were particularly satisfied with their overall experience with the police, when treated with respect and dignity and the crime and impact of it was taken seriously.

When asked about receiving their entitlements from the police; 46% of victims who completed the survey stated that the police provided them with a written acknowledgement of the crime and basic details of the offence, a lower number of victims (30%) stated that the police provided them with clear information about next steps and their rights as a victim.

Furthermore, only 29% reported that police asked them questions to identify their needs such as communication, mental health or support needs and less victims reported that police put appropriate support in place to address their needs (just 24%). Less than half (44%) of victims stated that the police referred them or offered to refer them to external support services such as Victim Support. It is important to note, that these responses came from victims who were already being supported by victim support.

The **West Midlands Police and Crime plan (2025-2029)** includes strong commitments on victims code compliance. Building on this foundation, this strategy outlines a comprehensive and coordinated approach, to ensuring compliance against the code.

Increase awareness of the victims' code	<ul style="list-style-type: none"> • OPCC to develop a victim's code communications campaign to raise awareness of the code by working alongside WMP and other stakeholders.
Reviewing compliance: criminal justice bodies	<ul style="list-style-type: none"> • Ensure oversight and scrutiny of West Midlands Police compliance with the Victims Code through OPCC Advisory Panel and Accountability and Governance Board. • Hold Criminal Justice Agencies to account through existing LCJB governance structure. • Collect and review prescribed information from CJS partners and share nationally. • Explore avenues for increasing compliance with the code such as promoting the use of live links and greater alignment with Witness Care Unit.
Collection of Victims Feedback	<ul style="list-style-type: none"> • Establish mechanisms to appropriately collect the voice of the victims in relation to how Victims experience the victims code. • Work alongside WMP in the development and procurement of the Victim Insight Platform and actively keep progress under review.
National Engagement	<ul style="list-style-type: none"> • Engage with the MOJ/National Victims Commissioner/APCC/NPCC/Home Office to influence direction and share the voice of victims at appropriate platforms. • Campaign with relevant ministers. • Campaign for meaningful sanctions for non-compliance with VCOP • Campaign for criminal justice inspectorates to place a focus on delivery of victims' rights within their regular inspections. • Engaging with the MOJ to influence suitable code compliance metrics.

¹ Annual Victims Survey 2023- Victims Commissioner

Violence Against Women and Girls (VAWG)

The January 2025 **National Audit Office VAWG report** found that one in twelve women are victims of violence each year, with the true figure likely to be much higher.

Women and girls face a significantly higher risk of harm, most often inflicted by men. These harms range from visible acts of violence to hidden forms of abuse, leaving lasting physical, emotional, social and financial scars. These harms are rooted in gender inequality, male dominance and the abuse of power. This is unacceptable and it will not be tolerated.

While VAWG predominantly affects women and girls, this strategy also recognises the experiences of men, boys, LGBTQ+, non-binary and gender non-conforming individuals. This strategy supports Governments **Men and Boys Explanatory Note 2025** which sits alongside the **Freedom from Violence and Abuse: A Cross Government Strategy to Build A Safer Society for Women and Girls 2025**.

Everyone is entitled to safety and support. Our ambition is to drive meaningful change through prevention, early intervention, and trauma-informed, survivor-led support. Together, we must build a region where violence is not tolerated, victim-survivors are believed, and gender equity is realised.

The **West Midlands Police and Crime plan (2025-2029)** includes strong commitments on tackling VAWG. Building on this foundation, this strategy outlines a comprehensive and coordinated approach, built around five key pillars that guide our regional response to violence against women and girls and hate crime:

Building Strong Foundations

- Strengthen VAWG data collection and use to better understand the scale, impact, needs and service demands.
- Develop a Regional Strategy and Joint Needs Assessment for supporting victim-survivors of VAWG in accordance with the Duty to Collaborate under the Victims and Prisoners Act (2024).

Enforcement & Criminal Justice

- Improve how the criminal justice system responds to VAWG by promoting a public health, whole-systems approach, ensuring organisations take responsibility for preventing abuse, protecting victims, and holding perpetrators to account.

Care & Support

- Improve and map care and support services for victim-survivors of VAWG across the region, ensuring clear referral routes and consistent access.

Intervention & Prevention

- Identify and map services that offer early help and prevention across all types of VAWG and share good practice and learning to strengthen regional responses.

Equality, Intersectionality & Cultural Competence

- Commissioning inclusive, culturally sensitive services that reflect the diverse experiences of individuals and families, and ensure support is tailored to their full range of needs.

This strategy also recognises the wider forms of harm that disproportionately affect women and girls, including sexual harassment, spiking, up-skirting, and online harms. These behaviours often occur in public spaces and digital environments, contributing to a culture of fear and control. We are committed to raising awareness, challenging harmful attitudes, and working with partners to improve responses to these crimes.

Sexual Assault and Abuse

Sexual assault and abuse (SAA) are serious forms of interpersonal violence that violate a person's autonomy, safety, and dignity. These harms can affect anyone, but disproportionately impact women and girls. They include physical, verbal, and visual acts of a sexual nature carried out without consent or understanding.

The Regional Picture: SAA Data (2024 – 2025)

- 11,621 sexual offences recorded - up 8.8% from last year.
- A recent rise in recorded other sexual offences, this is largely attributed to new offences introduced under the Online Safety Act 2023, which took effect on 1st February 2024.
- 6.7% positive outcome rate for rape offences.
- 3,365 rape cases outstanding in Crown Court (Q3 2024)².

Performance metrics are updated on a quarterly basis and shared here: [Storymaps Arcgis](#)

During the **Police and Crime Plan (2025–2029)** consultation, roundtables with victim-survivors of SAA were held. Participants described the police and the criminal justice system being invasive, re-traumatising and problematic. In addition, they felt that police services were not accessible when needed, with most participants not being informed of the Victim's Code, nor having its rights upheld, throughout their contact with criminal justice system. Many participants described wishing they had not reported the crime in the first place due to their negative experiences. In turn, to improve public trust, the criminal justice system needs better communication and support for victims, with quicker access to justice to prevent further harm and facilitate healing. This is reflected in our five key strategic pillars below, which underpin our regional approach to tackling SAA.

<h4>Building Strong Foundations</h4>	<ul style="list-style-type: none"> • Complete targeted needs assessments on SAA, focusing on mental health and racially minoritised communities, and deliver a regional assessment and strategy in partnership with others, aligned with the Duty to Collaborate under the Victims and Prisoners Act (2024). • Improve regional understanding of SAA by strengthening data collection and analysis - supported by the future recruitment of a VAWG data analyst.
<h4>Intervention & Prevention</h4>	<ul style="list-style-type: none"> • Strengthen the whole-system approach to preventing SAA and associated harms by enhancing early intervention, workforce capability, and multi-agency collaboration. • Reviewing the Exploitation and Abuse Competencies, Training and Development Framework to upskill staff across agencies. • Explore the commissioning of projects focused on technology assisted SAA. • Strengthen education for children and young people on consent, healthy relationships, and respect. • Work with the EMVAWG comms subgroup to improve understanding of and normalisation of trauma responses, plus awareness of myths and misconceptions around rape and sexual violence.

² CPS data summary Quarter 4 2024-2025 | The Crown Prosecution Service

Care & Support	<ul style="list-style-type: none"> • Improve and map care and support services for victim-survivors of SAA across the region, ensuring clear referral routes and consistent access. • Campaign for improved and ringfenced funding for victim-survivors of SAA. • Campaign for improved therapeutic support to reduce waiting times for counselling, particularly for child victims of recent and historical sexual abuse.
Criminal Justice & Enforcement	<ul style="list-style-type: none"> • Campaign for the further roll out of Specialist Sexual Violence Courts (SSVC). • Support the roll out of Independent Inquiry into Child Sexual Abuse (IICSA) recommendations regionally. • Supporting the Government's pilot scheme for legal advice in rape and serious sexual offence (RASSO) cases in the region.
Equality, Intersectionality & Cultural Competence	<ul style="list-style-type: none"> • Build public trust and transparency in the response to SAA by improving visibility, fairness, and access to justice. • Ensure services understand and respond to the holistic needs of individuals and families, delivering support that is person-centred, culturally responsive, and informed by lived experience.

Domestic Abuse

In the year ending March 2024, an estimated 2.3 million people experienced domestic abuse across England and Wales (**ONS, 2024**). Domestic abuse is one of the most pervasive and damaging crimes in society. It transcends social, economic, and cultural boundaries, and its consequences are both immediate and long-lasting. Rooted in the misuse of power and control, domestic abuse can take many forms and, too often, it remains hidden behind closed doors.

The Regional Picture: DA Data (2024 – 2025)

- 53,090 domestic abuse crimes recorded - a 5.4% decrease from last year.
- 9.0% positive outcome rate - up 3.6 percentage points from last year.
- Figures are likely influenced by counting rule changes and media impact on reporting. Service providers warn true prevalence is much higher than police data.

*Performance metrics are updated on a quarterly basis and shared here: **Storymaps Arcgis***

During the **Police and Crime Plan (2025–2029)** consultation, focus groups with victim-survivors revealed concerns about how domestic abuse is handled by police. Many felt perpetrators were treated more favourably than victim-survivors and described responses as inconsistent and lacking in empathy. Victim-survivors called for:

- Better cultural competency and empathy from officers
- Consistent and respectful engagement
- Improved training across frontline services

A broader call for evidence echoed these concerns, emphasising the need for stronger partnership working, increased resourcing, and a whole-system approach with enhanced professional training.

The OPCC is committed to a whole-system approach to tackling domestic abuse, with a strong focus on victim-survivor voice, perpetrator accountability and suicide prevention:

- We are working to ensure victim-survivors, including children, are heard and supported through improved multi-agency coordination and specialist trauma-informed services.
- Recognising the link between domestic abuse and suicide, we are leading efforts to understand and prevent abuse-related suicides.
- We are addressing the systemic failure to hold perpetrators to account, by strengthening interventions and preparing for new protective measures.
- We are addressing the unique needs of men experiencing domestic abuse, by commissioning a bespoke service for high risk male victims of domestic abuse.

These priorities highlight our commitment to breaking the cycle of abuse and safeguarding those affected. They are reflected in our five key strategic pillars, which underpin our regional approach to tackling domestic abuse.

<p>Building Strong Foundations</p>	<ul style="list-style-type: none"> • Build a well-informed work force to better identify, manage and support victims of DA. • Support innovation that meets the needs of victim-survivors while ensuring perpetrators are held to account. • Support partners in responding to the learnings from the Systems Readying and Domestic Abuse MACC Review conducted by Linxs Consultancy. • Develop Domestic Abuse Related Death Reviews (DARDR) chair/author guidance and enhance chair/author training to ensure that they are equipped with the knowledge and tools for suspected/confirmed suicide cases.
<p>Intervention & Prevention</p>	<ul style="list-style-type: none"> • Explore opportunities to upstream and deliver true early intervention/prevention with children and young people. • Continue working with West Midlands Police, the University of Birmingham and others to deliver the Domestic Abuse Suicide Project, delivering on a key recommendation in the previously commissioned Domestic Abuse Suicide Study. • Ensure MARAC effectively safeguards high risk victims of domestic abuse.
<p>Care & Support</p>	<ul style="list-style-type: none"> • Ensure that victims of DA in the West Midlands have access to high-quality support specialist services that reflect the individual complexities and needs of each person. • Improve criminal justice outcomes for victim-survivors by ensuring access to justice is guided by their individual needs and preferences. • Strengthen support for families bereaved as a result of domestic abuse • Continue the provision of high-quality support services, such as IDVAs. • Campaign the government for improved support for children and young people that are victim-survivors of DA.

Criminal Justice & Enforcement

- Improve positive outcomes for DA cases reported to the police and reduce attrition rates.
- Encourage greater application for protection orders, ensuring that breaches are policed robustly and recognised as a stalking offence where appropriate.
- Prepare for the implementation of Domestic Abuse Protection Orders (DAPOs), including the availability of interventions suitable for positive requirements.
- Identify and pursue opportunities to enhance our approach to managing perpetrators, ensuring that all interventions are informed by best practice, evidence-based methodologies, and align with Home Office and Respect guidance.
- Work with partners to improve notification of prison releases and/or sentence changes to victims of DA and stalking.
- Enhance West Midlands Police training on DA related suicide and unlawful act manslaughter by suicide cases.
- Ensure that public sector professionals, including police officers, are held accountable for their actions and are subject to a robust and impartial response.

Equality, Intersectionality & Cultural Competence

- Improve access to the criminal justice system and specialist support services for minoritised victim-survivors, recognising and addressing the unique barriers they face.
- Ensure appropriate interventions for perpetrators by understanding their backgrounds, including experiences of abuse and intersectional factors, to inform effective engagement with the criminal justice system.

Stalking

Stalking is a pattern of fixated, obsessive, unwanted, and repeated behaviour that poses a significant risk to victim-survivors, often resulting in severe psychological harm. Stalking often occurs through a combination of methods, with cyber-assisted stalking now a common and escalating concern. As a recognised factor in both homicide and suicide cases, stalking requires specialist risk management. It is often misidentified as harassment, but unlike harassment, which typically arises from disputes, stalking is characterised by a targeted focus on a person. It can happen to anyone; most victim-survivors know their stalker(s), though some may have only had brief or no contact. Regardless of the relationship, the risk and impact remain profound, often extending to children, family members, and professionals.

The Regional Picture: Stalking Data (2024 – 2025)

- 34,894 stalking and harassment offences recorded - down 11.8% from last year. Of these, 46.6% were DA related.
- Overall positive outcome rate for these offences stands at 6.6%.

Performance metrics are updated on a quarterly basis and shared here: [Storymaps Arcgis](#)

The consultation for the **Police and Crime Plan (2025–2029)** included a victims' roundtable with Independent Stalking Advocate Caseworkers (ISACs), who represented the voices of stalking victim-survivors. Key concerns included serious psychological harm, threats of violence and victim suicidality. Issues raised included police misidentification of stalking behaviours, failure to link related offences, and missed opportunities for protective interventions. Poor advice and attitudes (especially around stranger stalking) were also highlighted.

Below, our five strategic pillars set out the regional priorities for tackling both DA and non-DA stalking.

Building Strong Foundations	<ul style="list-style-type: none"> • Publish a Regional Stalking Practice Framework, developed in collaboration with our partners. • Apply learning from the Stalking Problem Profile and partner expertise to strengthen both strategic and tactical responses to stalking.
Intervention & Prevention	<ul style="list-style-type: none"> • Strengthen multi-agency understanding and responses to stalking regionally. This includes a focus on improving recognition and support for children and young people under 16. • Seek continued commissioning of the Early Awareness Stalking Intervention (EASI) in the West Midlands, whilst also engaging with opportunities to implement innovative approaches.
Care & Support	<ul style="list-style-type: none"> • Continue to commission the West Midlands Specialist Stalking Support Service. • Advocate for sustainable funding to expand the number of Independent Stalking Advocacy Caseworkers (ISACs) across the region, ensuring victim-survivors have access to specialist support, including counselling and wellbeing services.
Criminal Justice & Enforcement	<ul style="list-style-type: none"> • Ensure West Midlands Police maintains progress on the 2024 HMIC recommendations in response to the Super Complaint. • Maximise applications for Stalking Protection Orders, ensuring the effective use of positive requirements. • Ensure West Midlands Police implement a trauma-responsive process aligned with the 'Right to Know' statutory guidance.
Equality, Intersectionality & Cultural Competence	<ul style="list-style-type: none"> • Improve access to the criminal justice system and specialist support services for minoritised victim-survivors of stalking, including those affected by Honour-Based Abuse (HBA) and from LGBTQ+ communities, by recognising and addressing the unique barriers they face. • Ensure appropriate interventions for perpetrators of stalking by understanding their backgrounds, including experiences of abuse and intersectional factors, to inform effective engagement with the criminal justice system.

Hidden Harmful Practices

Hidden Harmful Practices are less visible but deeply damaging forms of violence against women and girls. Tackling these abuses is a key priority in the **Police and Crime Plan (2025–2029)**, which reflects our commitment to addressing even the most concealed forms of harm. Below are examples of these harms and the steps we are taking to prevent and respond to them.

<p>Female Genital Mutilation (FGM) FGM involves the injury or alteration of female genital organs for non-medical reasons. It is illegal in the UK under the Female Genital Mutilation Act 2003 and the Serious Crime Act 2015, which also introduced a statutory duty to report for certain professionals.</p>	<ul style="list-style-type: none"> • We published the FGM Practice Framework, setting out regional ambitions and practical steps to improve the response to FGM. • We commission an FGM support service in Coventry and work in partnership across the region with WMP, HS ICBs, LAs and specialist support services.
--	---

<p>Honour-Based Abuse (HBA) HBA refers to violence or abuse committed to protect or defend the perceived honour of a family or community. It can include forced marriage, virginity testing, female genital mutilation and coercive control. It often involves multiple perpetrators.</p>	<ul style="list-style-type: none"> • We fund a 24-hour multilingual Forced Marriage and Honour-Based Abuse (HBA) Helpline, co-run by Roshni and Panahghar. Additional funding has supported the creation of specialist HBA/FM Independent Domestic Violence Advisor (IDVA) roles and expanded community support. • We published the HBA Practice Framework to bring together the region’s ambitions and to improve the responses.
<p>Other Hidden Harmful Practices (HHP) HHPs uncured lesser known practices such as conversion therapy, transnational marriage abandonment and spiritual abuse. These practices disproportionately affect women and girls, though men, boys and gender-diverse individuals may also be impacted.</p>	<ul style="list-style-type: none"> • We raised awareness of HPPs through a webinar with academics and specialist services and developed a guide based on partner feedback, presenting regional recommendations to tackle these harms. • Through the 2025-2026 Victims fund over £110,000 has been allocated to support a third sector organisations to raise awareness of and to tackle HHPs.

Our strategic priorities have been shaped through our strong relationship with the EMVAWG Alliance and specialist support services, and academic partners. This collaborative approach ensures our frameworks and guidance are informed by lived experience and expert insight, with every voice contributing to the direction of our work.

<p>Building Strong Foundations</p>	<ul style="list-style-type: none"> • Increase regional awareness and understanding of HBA, FGM and HHPs. • Strengthen data collection and use to better understand the scale and impact of HBA, FGM and HHPs regionally. • Embed HBA, FGM and HHPs in relevant governance structures to ensure that these issues are addressed as regional priorities. • Collaborate with partners to develop a self-assessment tool that audits support services for HBA, FGM and HHPs.
<p>Intervention & Prevention</p>	<ul style="list-style-type: none"> • Promote the Female Genital Mutilation and Honour-Based Abuse Practice Frameworks, along with the Hidden Harmful Practices Guide, across the region, ensuring that updates are made every two years. • Share knowledge, training and resources with partners to strengthen understanding of these harms, with a focus on upskilling West Midlands Police.
<p>Care & Support</p>	<ul style="list-style-type: none"> • Work with survivors and specialist third-sector organisations to ensure services are tailored to meet the needs of victim-survivors of these harms. • Review existing support services funded through the Victims Fund to ensure victims of HBA, FGM and HHPs can access specialist support services locally.
<p>Criminal Justice & Enforcement</p>	<ul style="list-style-type: none"> • Campaign for a statutory definition of HBA so that victim-survivors can access justice. • Work in partnership with West Midlands Police to increase the use of Civil Protection Orders such as Forced Marriage Protection Orders (FMPOs) and Female Genital Mutilation Protection Orders (FGMPOs).
<p>Equality, Intersectionality & Cultural Competence</p>	<ul style="list-style-type: none"> • Advocate for sustained funding for specialist by-and-for support services for victim-survivors of HBA, FGM and HHPs. • Campaign for a firewall to protect victim-survivors with insecure immigration status.

Women in Criminal Justice

Abuse and exploitation are well-evidenced drivers of women's offending and experiences of multiple disadvantages. Around 60% of women in prison are survivors of domestic abuse – a figure likely underestimated due to barriers to disclosure (**Prison Reform Trust, 2017**). Racially minoritised communities face disproportionate criminalisation within this context.

As captured during the consultation period for the **Police and Crime Plan (2025–2029)**, Women's centres play a vital role in improving outcomes for women. During a consultation event, one woman shared:

“I am so used to not having anyone – I just needed someone to catch me. The women's centre caught me.”

Securing sustainable funding from central government remains essential to ensure specialist expertise continues to shape work in the West Midlands. These priorities are embedded within our five strategic pillars, which outline our broader regional commitment to supporting women in the criminal justice system.

Building Strong Foundations	<ul style="list-style-type: none"> • Engage with the Ministry of Justice and partners to continue delivery of the Women's Intensive Supervision Court, seeking opportunities to mainstream this approach. • Align our regional approach with the national strategy and direction of the Women's Justice Board and associated groups. • Embed learnings from the Women's Risk and Needs Assessment (WRNA) into our regional approach to supporting women in criminal justice system.
Intervention & Prevention	<ul style="list-style-type: none"> • Work with statutory and third-sector partners, alongside girls and women in the West Midlands, to develop gender-responsive approaches that reduce entry into the youth and criminal justice systems and break the cycle of reoffending.
Care & Support	<ul style="list-style-type: none"> • Improve the criminal justice response to women and girls who are victims of violence and abuse but present as offenders, ensuring responses reflect the complexity of their lived experiences and provide tailored pathways to reduce harm and reoffending.
Criminal Justice & Enforcement	<ul style="list-style-type: none"> • Ensure the Victims Code is upheld and delivered for women offenders who are also victims of crime. • Continue working with West Midlands Police and partners to maximise the use of Out of Court Resolutions and bail options for women to divert them from the criminal justice system into community-based interventions.
Equality, Intersectionality & Cultural Competence	<ul style="list-style-type: none"> • Improve understanding of the unique needs and barriers faced by racially minoritised communities who are accused of offending, particularly in their interactions with the criminal justice system and access to appropriate support services

Hate Crime

Hate crimes, driven by hostility or prejudice toward protected characteristics, can have devastating impacts on individuals and communities. These offences are defined by their perceived motivation, whether based on race, religion, sexual orientation, disability or gender identity.

The Regional Picture: Hate Crime Data (2024 – 2025)

- 8,495 hate crime offences, down 4.1%. Race hate was the largest proportion at 78.7%.
- A 14.8% positive outcome rate, a 4.4 percentage point increase.
- The West Midlands Regional Hate Crime Support service received a total of 2069 referrals, Race hate was the largest proportion at 71%.

Performance metrics are updated on a quarterly basis and shared here: [Storymaps Arcgis](#)

During the **Police and Crime Plan (2025 - 2029)** consultation, respondents called for greater efforts to educate the public on what constitutes a hate crime, alongside making reporting more accessible. LGBTQ+ youth expressed low confidence in police responses, fearing their identity might affect how they are treated. More broadly, victims highlighted the need for more personalised and transparent communication about case progress, with a preference for in-person updates over letters or emails. Rebuilding trust and strengthening community relations emerged as central themes, especially in ensuring victims-survivors feel believed and supported in seeking justice.

Below, our strategic pillars set out the regional priorities for tackling hate crime and improving outcomes for victim-survivors across the West Midlands.

Building Strong Foundations	<ul style="list-style-type: none"> • Advocate for the development of a national Hate Crime Strategy to ensure a consistent and coordinated approach across the country. • Promote greater awareness and understanding of hate crime, empowering communities and victims to recognise abuse and access support with confidence.
Intervention & Prevention	<ul style="list-style-type: none"> • Proactively respond to local, national, and global events that may increase community tensions or impact those communities most affected by hate crime.
Care & Support	<ul style="list-style-type: none"> • Strengthen support for victims of hate crime by ensuring accessible, empathetic reporting pathways. • Review current services to establish dedicated, specialist provision that helps victims cope, recover and rebuild trust.
Criminal Justice & Enforcement	<ul style="list-style-type: none"> • Encourage and facilitate the reporting of hate crime, whether direct through the police or via third party reporting centres. • Work with West Midlands Police to amplify the voice of victims of hate crime through scrutiny panels/IAGs.
Equality, Intersectionality & Cultural Competence	<ul style="list-style-type: none"> • Ensure that intersectionality is being considered through embedding learning from the West Midlands Police Race Action Plan and other equality impact assessments



Exploitation and Abuse

Exploitation is a form of abuse where an individual or group takes advantage of a power imbalance to coerce, manipulate, or deceive another person for their own personal gain, whether that gain is financial, sexual, or social. Exploitation involving groups is also a form of Serious and Organised Crime (SOC). The strategic Policing Requirement 2023 defines SOC as “Individuals planning, coordinating and committing serious offences, whether individually, in groups and/or as part of transnational networks. The main categories of serious offences covered by the term are: child sexual exploitation and abuse; illegal drugs; illegal firearms; fraud; money laundering and other economic crime; bribery and corruption; organised immigration crime; modern slavery and human trafficking; and cybercrime³.” These categories of SOC can be grouped into the following three areas:

- Child sexual abuse/exploitation, modern slavery and human trafficking, and organised immigration crime.
- Community-related threats covering illegal drugs, including county lines, illegal firearms, and organised acquisitive crime.
- Economic threats including cybercrime, fraud, money laundering, bribery and corruption, and sanctions evasion.

This strategy will focus on regional activity around Exploitation and Missing (EM) and Modern Slavery Human Trafficking (MSHT). This strategy acknowledges that there will be victims-survivors that are impacted by the other forms of SOC and as such commits to supporting all victims of crime.

The Regional Picture: Exploitation & Missing Data (2024 – 2025)

- 5,146 Missing Persons
- 11,317 Missing Episodes⁴
- Averaging as 2.2 missing episodes per person

The Regional Picture: Modern Slavery Data (2024 – 2025)

- 893 modern slavery offences were recorded under the modern slavery offence category.
- 1,075 offences were flagged with the keyword ‘modern slavery’, indicating a connection to modern slavery but not classified as the specific offence.

³ Strategic Policing Requirement (accessible) - GOV.UK (www.gov.uk)

⁴ Exploration and Missing Dashboard (arogis.com)

In his Police and Crime Plan (PCP) Commissioner Simon Foster commits to ‘preventing and tackling violence including SOC and exploitation’ by expecting WMP and the West Midlands Regional Organised Crime Unit (“ROCU”) to make a significant contribution to this national effort, working alongside the NCA. The PCP also commits to collaborating with partners to ensure disruption and enforcement against perpetrators of organised crime, regenerate neighbourhoods and increase the resilience of local communities.

During the **Police and Crime Plan (2025–2029)** consultation, across these areas, stakeholders raised concerns about clarity, safeguarding and trust:

- **Clear definitions:** County lines needs a clear, accessible definition to avoid jargon. Many felt it should be separated from wider criminal exploitation.
- **Protecting vulnerable people:** Extra effort is needed to safeguard those at risk of organised crime, including an awareness of cuckooing.
- **Understanding sexual exploitation:** Strong emphasis on making connections between sex work and prostitution and child sexual exploitation to prevent victims being overlooked.
- **Trust in policing:** Lack of confidence in police was highlighted as a barrier. Closer work with communities, youth services, families, and schools are needed to build trust and re-educate.
- **Equality and inclusion:** Removing discriminatory assumptions and addressing risks faced by protected groups (race, gender, disability, sexual orientation) is essential.

In the West Midlands, exploitation is defined as when an individual or group uses an imbalance of power to coerce, control, manipulate or deceive a child, young person under 18, or an adult. This exploitation may occur through violence or threats of violence, for the financial or other gain of the perpetrator or facilitator, or in exchange⁵ for something the victim needs or wants. A person may be considered exploited even if the activity appears consensual. Exploitation does not always involve physical contact and can also take place through technology.

Exploitation, Extra-Familiar Harm and Contextual Safeguarding are important concepts in the protection of vulnerable individuals, particularly children and young people, from harm or abuse.

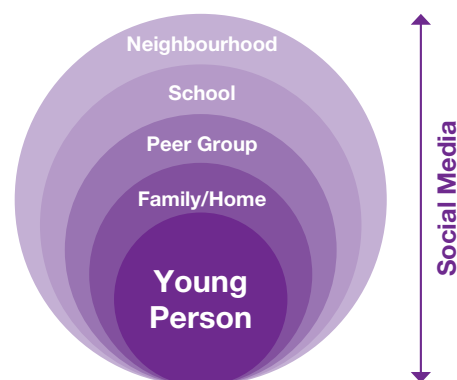
Exploitation can take various forms, including but not limited to the below:

- Child Sexual Exploitation (CSE)
- Child Criminal Exploitation (CCE)
- Modern Slavery and Human Trafficking - Labour / Financial Exploitation, Debt Bondage, Domestic Servitude and Organ Trafficking

Extra Familial Harm refers to harm that occurs outside the family environment, typically within the community or peer group. Common examples include peer abuse, child sexual exploitation, criminal exploitation, gang affiliation, serious youth violence, trafficking and radicalization.

Contextual Safeguarding is a framework recognising that harm occurs in social environments beyond the home such as neighbourhoods, schools and peer groups with social media influences and it must be tackled contextually

Extra-familial harm is often understood through the lens of contextual safeguarding, as the diagram (adapted from Firmin, C., 2013.) shows, contextual safeguarding is about considering an individual or cohort of children and identifying who may be influencing them and the degree of that influence. environment and how it contributes to their well-being.



Modern Slavery and Human Trafficking

Modern Slavery Human Trafficking (MSHT) encompasses a wide range of abuses including slavery, servitude and forced or compulsory labour and trafficking for the purpose of exploiting a person⁶. These are typically for financial benefit though this is not always the principle motivation.

The forms of MSHT include;

- **Labour exploitation** - Working for little or no payment, including organ harvesting
- **Domestic servitude** –being exploited to carry out domestic work and chores.
- **Sexual exploitation** - Child sexual exploitation by group or individual. This can include Sex work in fixed or changing location, trafficking for personal or third-party gratification (it is important to note that while some engage in sex work by choice for economic reasons or autonomy, others are victims of human trafficking, coercion and abuse highlighting the need to distinguish between consensual work and forced exploitation, which often overlaps with criminality)
- **Criminal exploitation** - Forced gang-related activity, forced labour in illegal activities, forced acquisitive crime/begging, financial exploitation and sham marriages. It is not necessary for the use of force to be evident in the criminal exploitation of a child.

Organised Immigration Crime (OIC)

Organised Immigration Crime (OIC) is the smuggling of human beings that takes place only across international borders, in contrast to Human Trafficking (HT) that can take place both domestically and internationally. Although the two crimes are often linked, they are legally and practically distinct: Smuggling involves facilitating illegal entry across borders, usually with the consent of the person being smuggled. It is typically a one-off transaction where the relationship ends once the person reaches the destination- the primary motivation is financial gain for transportation. In contrast, human trafficking involves coercion and deception for the purpose of exploitation (sexual, criminal, labour) and victims are controlled and exploited after arrival.

2023 saw several changes to policy and legislation in relation to Modern Slavery as a result of Nationality and Borders Act and the Illegal Migration Act and a collective concern that this will adversely impact vulnerable and exploited victims.

These changes to legislation, which were allegedly bought about to negate abuse of the NRM process and in particular as a response to illegal immigration and small boat crossings in recent years, have resulted in impacting the fundamental protections which the Modern Slavery Act 2015 initially sought to bring about.

Regional approach

There is no single solution to tackling Exploitation and Abuse. We firmly believe that a holistic approach is needed. Police and partner agencies must utilise all available powers to relentlessly disrupt and dismantle organised crime groups. Enforcement activity is just one aspect of how we tackle organised crime.

In line with the recently published Home Office Action Plan 2025 our regional priorities for tackling the exploitation for children and adults are listed below.

Data and Insights

- Support the development of the threat risk and harm profile for Exploitation and MSHT
- Work with multi agency partners in developing a problem profile
- Disseminate the recommendations of the CSE problem profile across the partnership
- Improved data collation (agreed protocols, Common assessment framework, perpetrator profile).

⁶ What is Modern Slavery (MS)? - NPCC Modern Slavery & Organised Immigration Crime Programme (npcc-msoicu.co.uk)

<p>Developing an approach to Prevention</p>	<ul style="list-style-type: none"> • Work with Local Authorities to develop an understanding of home invasion (Cuckooing). • Support the implementation of the Philomena protocol across the region and understand impact • Build multi-agency partnerships to prevent repeat missing incidents • Focus on early intervention and effective disruption • Ensure WMP/ OPCC approach to identifying Modern Slavery within supply chains is reviewed annually • As a partnership, understand the enablers that allow exploitation and modern slavery to occur • Understand implications of the Online Safety Act 2023. • Identifying and promoting national guidance, toolkits and regional good practice approaches to enhance the approach and influence systems change across the region with support from established and recognised networks • Working in partnership to strengthen the regional response to screening and risk assessment, referral pathways and evidence-based programmes that effectively identify and respond to vulnerability and harm.
<p>Protecting victims</p>	<ul style="list-style-type: none"> • Support the regional implementation of the IICSA recommendations. • Support the partnership to understand and implementing the recommendations from the CSE problem profile • Support the safeguarding of sex workers through piloting Operation Sandstar 2, alongside the continuation of Operation Sandstar 1. • First responder training. • Ensure there are victim care support services available to support the needs of victims of exploitation • Advocate for changes to the NRM and feed into national consultations on NRM reforms. • Share Solihull best practice in relation to the devolved children’s NRM pilot. • Increase the understanding of the reasons behind the increase in numbers of adults who choose not to be referred in to the NRM. Enhance the child to adult transition experience for young victims turning 18.
<p>Prosecuting offenders / improving criminal justice outcomes</p>	<ul style="list-style-type: none"> • Improve prosecution rates – align to the national framework for investigations. • Work with West Midlands Police to improve conviction rates for cuckooing. • Increase the awareness of and application of Slavery and Trafficking Protection Orders (STPOs) and Slavery and Trafficking Risk Orders (STROs). • Specialist Modern Slavery teams –with the right training and awareness alongside this, teams of financial investigators. • Supporting the victim journey through CJS and overall compliance with the Victims Code • Increase the use of evidence led prosecutions in cases of modern slavery • Support coordination and delivery of intensification programmes such as Op Adaint, CLIW and Project Turnstone to fill intelligence gaps, promote awareness, disrupt offending



west midlands
police and crime
commissioner

VICTIMS STRATEGY

2025-2029

Contact us

Office of the Police and Crime Commissioner

PO Box 52, Lloyd House,
2 Colmore Circus Queensway,
Birmingham, B4 6NQ

Telephone

0121 626 6060


Website

www.westmidlands-pcc.gov.uk

Email

wmpcc@westmidlands.police.uk

Social Media

@WestMidsPCC 

Facebook.com/WestMidsPCC 

@WestMidsPCC 