



BIRMINGHAM COMMUNITY  
SAFETY PARTNERSHIP

WORKING TOGETHER FOR A SAFER CITY

# **PERFORMANCE UPDATE May 2014**

# BCSP Priorities 2013/14

Key Outcome	Measure	2013/14 Measure	YTD Performance
Total Recorded Crime	Reduce Total Recorded Crime	-5.0%	3.0%
Perceptions of Safety	BCC Tracker respondents 'feel safe during the day'	94.0%	93.0%
Violence With Injury (VWI)	Reduce VWI Recorded Crime	-9.0%	11.6%

	Not hitting target
	Improving
	Hitting target

Strategic Thematic Priorities	Measure	2013/14 Target	YTD Performance
Tackling Re-offending*	All re-offending - Adults & Juveniles (Birmingham)	26.2%	27.0%
	Probation - Court Orders (SWM Area)	35.1%	31.8%
	Juveniles - YOTS (Birmingham)	35.3%	33.0%
	PPO (Birmingham)	75.1%	67.5%
	DIP (Birmingham)	57.5%	52.9%
Anti-Social Behaviour	% WMP customer satisfaction with ASB service	80.0%	75.1%
	% BCC customer satisfaction with ASB service	TBC	N/A
Night-Time Economy (BWSA, 2000-0459hrs)	Reduce Total Recorded Crime	-8.0%	-4.9%
	Reduce VWI	-10.0%	1.5%
	Reduce Mobile Phone Theft	-7.0%	-13.6%
	Purple Flag' Status	<i>(Retain)</i>	<i>Retained</i>
Gang Violence	Reduce re-offending in identified cohort	N/A	N/A
	Reduce knife-enabled VWI	(Baseline 296)	25.5%
	Reduce gun-enabled VWI	(Baseline 63)	11.1%
Domestic Violence	Reduce Domestic Most Serious Violence (MSV)	-9.0%	20.3%
	Reduce Domestic VWI	-9.0%	20.2%

## Copyright & Restrictions

All information discussed during this document and meeting is restricted ('Protect' level) and must not be disclosed to third parties, other than employees of relevant organisations. All maps within this report are reproduced from the Ordinance Survey mapping with the permission of the Controller of Her Majesty's Stationery Office © Crown

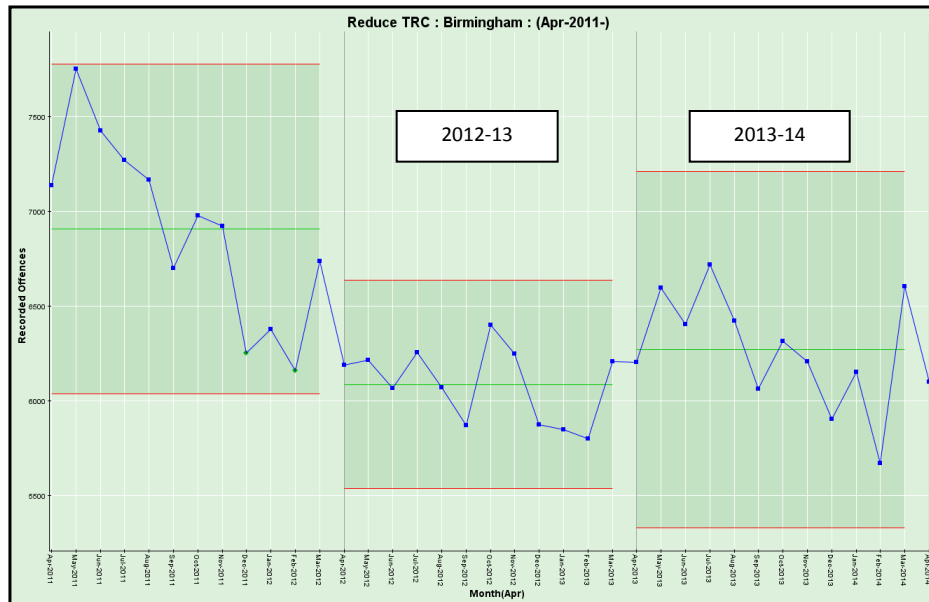
copyright. Unauthorised reproduction infringes Crown copyright and may lead to prosecution or civil proceedings. West Midlands Police Licence No. 100022494 (2014).

\*Re-offending 'Measure' and Performance are based on moving average.



# Total Recorded Crime

Total Recorded Crime											
1st April 2012- 31st Mar 2013 Baseline	Measure	LPU	1st Apr '12 - 31st Mar '13	1st Apr '13 - 31st Mar '14	Change	% Change	District	1st Apr '12 - 31st Mar '13	1st Apr '13 - 31st Mar '14	Change	% Change
18507	-4%	East	18506	20517	2011	10.9%	Hall Green	6019	6476	457	7.6%
							Hodge Hill	6138	6808	670	10.9%
							Yardley	6349	7233	884	13.9%
10883	-4%	North	10880	10521	-359	-3.3%	Erdington	7025	6773	-252	-3.6%
							Sutton Coldfield	3855	3748	-107	-2.8%
18447	-5%	South	18445	18529	84	0.5%	Edgbaston	5941	6144	203	3.4%
							Northfield	6691	6554	-137	-2.0%
							Selly Oak	5813	5831	18	0.3%
25228	-6%	West & Central	25210	25683	473	1.9%	Ladywood	19390	19799	409	2.1%
							Perry Barr	5820	5884	64	1.1%
<b>73065</b>	<b>-5%</b>	<b>Birmingham</b>	<b>73041</b>	<b>75250</b>	<b>2209</b>	<b>3.0%</b>					
Fall in performance and not meeting Measure											
Improvement in performance, but not achieving Measure											
Achieving Measure											

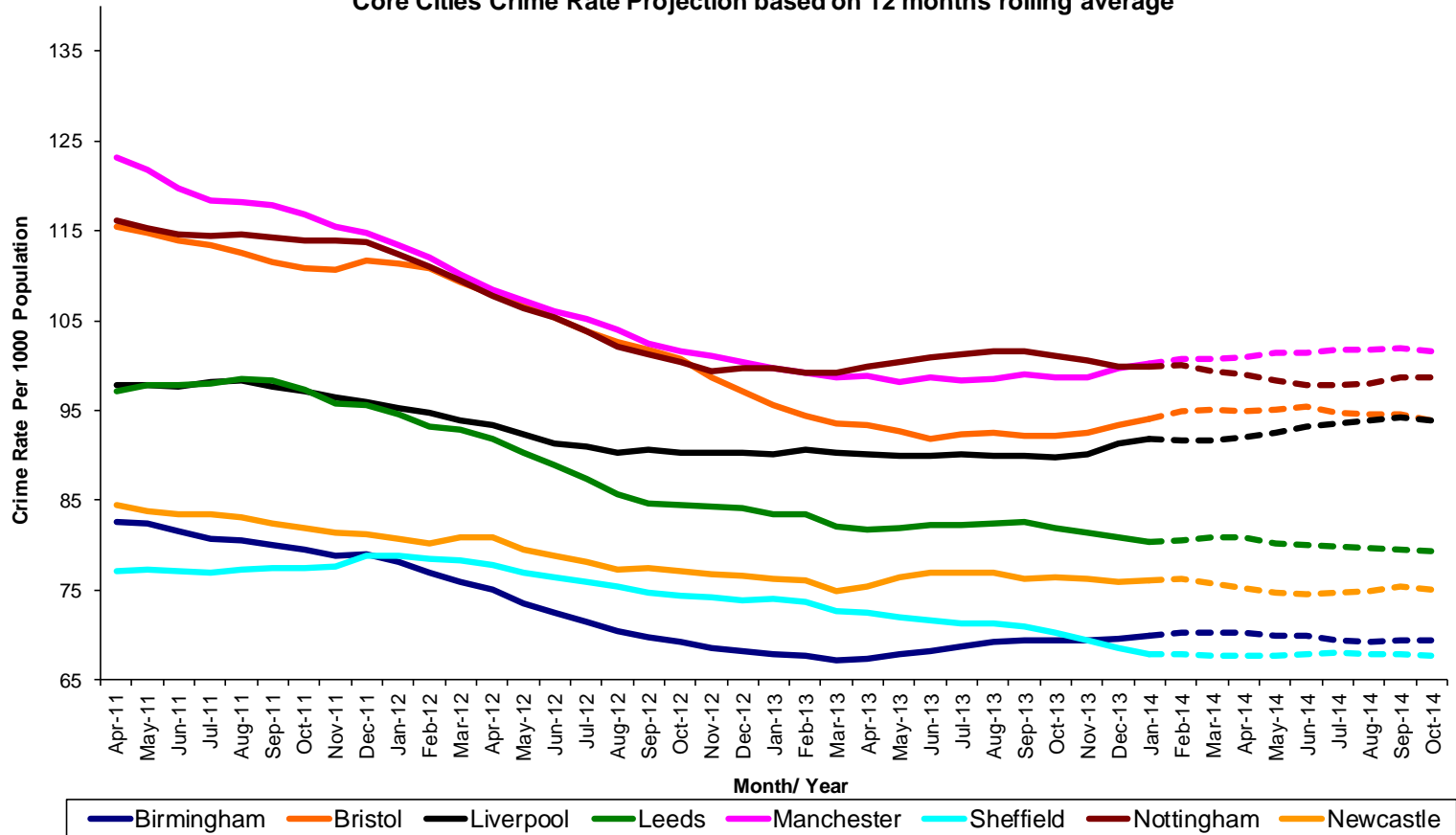




<b>Core City Comparison - Total Recorded Crime (12 Months)</b>				
<b>CSP</b>	<b>Apr '12 - Mar '13</b>	<b>Apr '13 - Mar '14</b>	<b>% Change</b>	<b>Apr'13 - Mar'14 per 1000 population</b>
Sheffield	40089	37550	-6%	68.1
<b>Birmingham</b>	<b>72170</b>	<b>75287</b>	<b>4%</b>	<b>70.1</b>
Newcastle	20906	21013	1%	75.3
Leeds	61634	60650	-2%	80.8
Liverpool	42019	42769	2%	91.8
Bristol	40036	40649	2%	95.0
Nottingham	30121	30220	0%	99.4
Manchester	49641	50837	2%	101.1



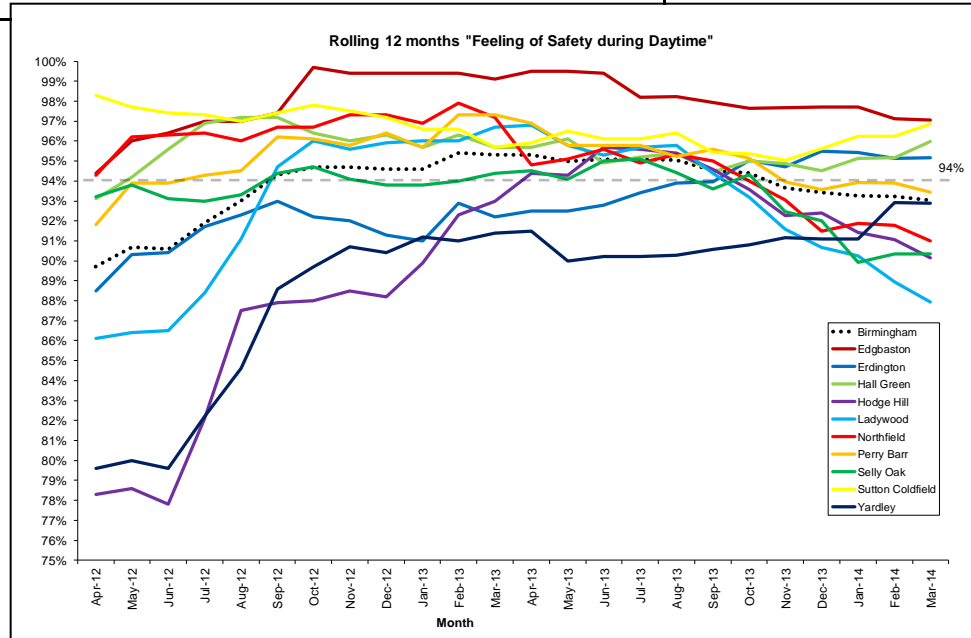
**Core Cities Crime Rate Projection based on 12 months rolling average**



# BCC Tracker Respondents 'feel safe during the day'

Measure: 94% of People in Birmingham "feel safe during the day"

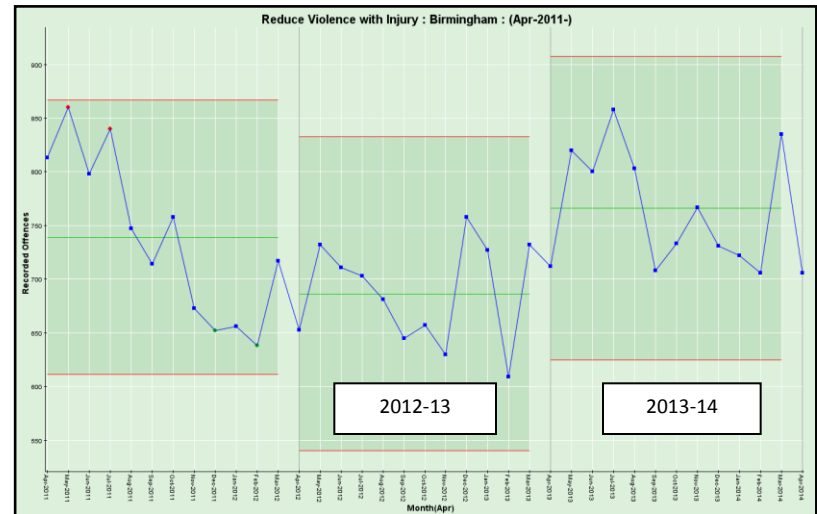
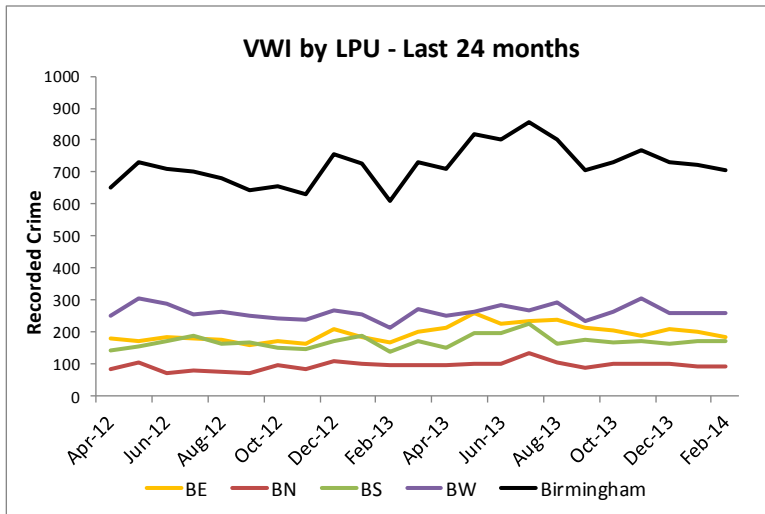
LPU	Apr'12 - Mar'13	Apr'13 - Mar'14	Change	District	Apr'12 - Mar'13	Apr'13 - Mar'14	Change
East	93.4%	93.0%	-0.4%	Hall Green	95.7%	96.0%	0.3%
				Hodge Hill	93.0%	90.1%	-2.9%
				Yardley	91.4%	92.9%	1.5%
North	94.0%	96.0%	2.0%	Erdington	92.2%	95.2%	3.0%
				Sutton Coldfield	95.7%	96.9%	1.2%
South	96.9%	92.8%	-4.1%	Edgbaston	99.1%	97.1%	-2.0%
				Northfield	97.2%	91.0%	-6.2%
				Selly Oak	94.4%	90.3%	-4.1%
West & Central	97.0%	90.6%	-6.4%	Ladywood	96.7%	87.9%	-8.8%
				Perry Barr	97.3%	93.4%	-3.9%
<b>Birmingham</b>	<b>95.3%</b>	<b>93.0%</b>	<b>-2.3%</b>				
	<b>Fall in performance and not meeting Measure</b>						
	<b>Improvement in performance, but not achieving Measure</b>						
	<b>Achieving Measure</b>						





# Reduce Violence With Injury

Violence With Injury											
1st April 2012-31st Mar 2013 Baseline	Measure	LPU	1st Apr '12 - 31st Mar '13	1st Apr '13 - 31st Mar '14	Change	% Change	District	1st Apr '12 - 31st Mar '13	1st Apr '13 - 31st Mar '14	Change	% Change
2140	-9%	East	2138	2596	458	21.4%	Hall Green	640	796	156	24.4%
							Hodge Hill	816	984	168	20.6%
							Yardley	682	816	134	19.6%
1057	-6%	North	1058	1204	146	13.8%	Erdington	758	862	104	13.7%
							Sutton Coldfield	300	342	42	14.0%
1950	-10%	South	1949	2159	210	10.8%	Edgbaston	605	673	68	11.2%
							Northfield	746	839	93	12.5%
							Selly Oak	598	647	49	8.2%
3093	-10%	West & Central	3093	3235	142	4.6%	Ladywood	2399	2483	84	3.5%
							Perry Barr	694	752	58	8.4%
<b>8240</b>	<b>-9%</b>	<b>Birmingham</b>	<b>8238</b>	<b>9194</b>	<b>956</b>	<b>11.6%</b>					
Fall in performance and not meeting Measure											
Improvement in performance, but not achieving Measure											
Achieving Measure											



## Tackling Re-offending

<b>Single Indicator - Proven Reoffending Rate 12 Months*</b>	<b>National 12 Month Average</b>	<b>Local 12 Month Average*</b>	<b>Performance (to National Average)</b>
All Reoffending - Adults and Juveniles - Birmingham	26.2%	27.0%	0.8%
Probation - Court Orders (SWM Area)	35.1%	31.8%	-3.3%
Juvenile - Birmingham (YOTS)	35.3%	33.0%	-2.3%
PPO - Birmingham	75.1%	67.5%	-7.6%
DIP - Birmingham	57.5%	52.9%	-4.6%

\*Latest figures as at 01/05/14





## Anti-Social Behaviour

LPU	Measure %	Apr'13 - Mar'14	Variance
East	80.0%	73.0%	-7.0%
North	80.0%	75.4%	-4.6%
South	80.0%	74.7%	-5.3%
West & Central	80.0%	79.3%	-0.7%
<b>Birmingham</b>	<b>80.0%</b>	<b>75.1%</b>	<b>-4.9%</b>

BCC Measure	YTD (Apr'13 - Mar'14)	
	Positive Response	n
How easy was it to report a complaint?	70.3%	149/212
Agree a course of action with IO?	74.2%	98/132
Were agreed actions met?	60.5%	75/124
Rate staff member dealing with complaint.	71.3%	144/202



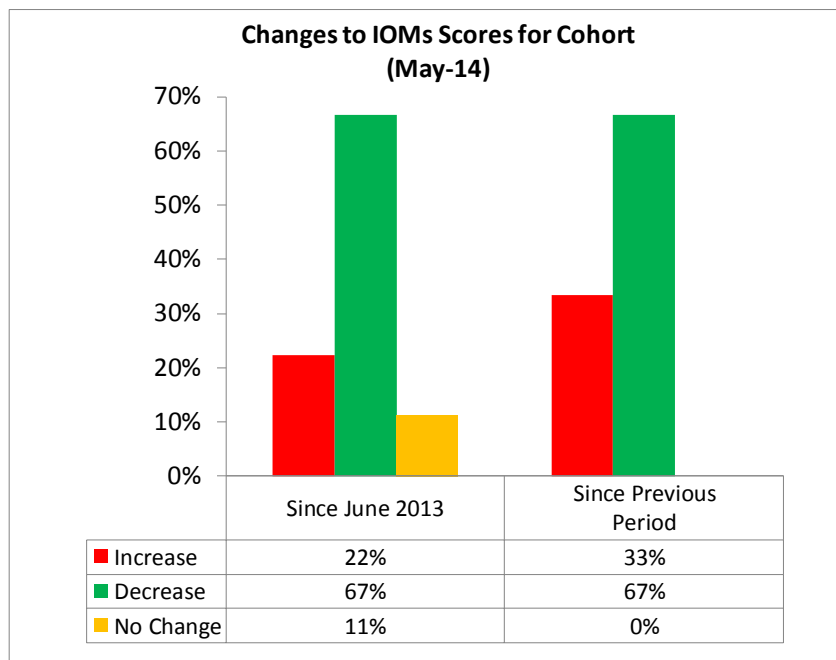
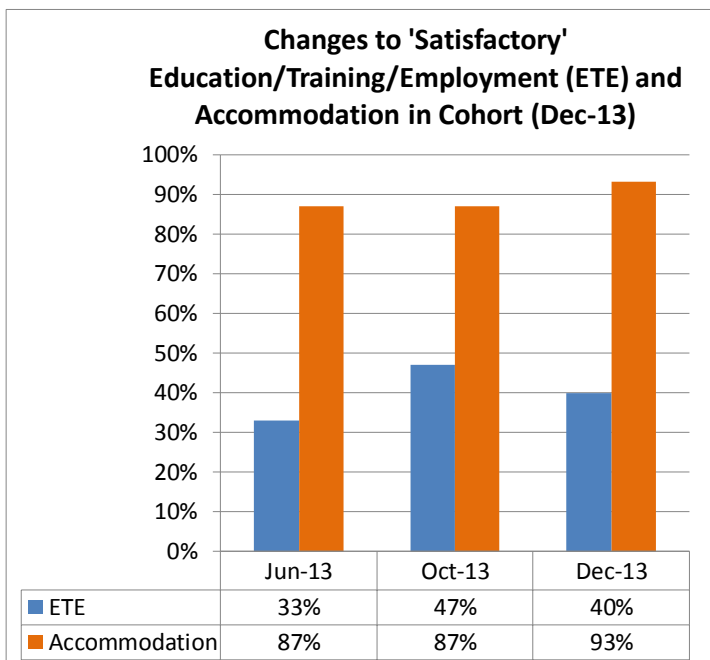
## Night-Time Economy

<b>City Centre (BWSA) NTE (2000-0459hrs)</b>						
<b>1st April 2012- 31st Mar 2013 Baseline</b>	<b>Measure</b>	<b>Indicator</b>	<b>1st Apr '12 - 31st Mar '13</b>	<b>1st Apr '13 - 31st Mar '14</b>	<b>Change</b>	<b>% Change</b>
3060	-8%	Total Recorded Crime	3056	2907	-149	-4.9%
712	-10%	Violence With Injury	713	724	11	1.5%
985	-7%	Mobile Phone Theft	985	851	-134	-13.6%
N/A		Retain Purple Flag Status	N/A			Retained
<b>Fall in performance and not meeting Measure</b>						
<b>Improvement in performance, but not achieving Measure</b>						
<b>Achieving Measure</b>						



## Gang Violence

Selected Violence Statistics						
1st April 2012-31st Mar 2013 Baseline	Measure	Indicator	1st Apr '12 - 31st Mar '13	1st Apr '13 - 31st Mar '14	Change	% Change
N/A	N/A	Reduce re-offending in identified cohort	N/A (See below)			
296	N/A	Reduce knife-enabled VWI	349	438	89	25.5%
63	N/A	Reduce gun-enabled VWI	63	70	7	11.1%
<b>Fall in performance and not meeting Measure</b>						
<b>Improvement in performance, but not achieving Measure</b>						
<b>Achieving Measure</b>						





# Domestic Violence

Domestic Related Most Serious Violence											
1st April 2012-31st Mar 2013 Baseline	Measure	LPU	1st Apr '12 - 31st Mar '13	1st Apr '13 - 31st Mar '14	Change	% Change	District	1st Apr '12 - 31st Mar '13	1st Apr '13 - 31st Mar '14	Change	% Change
53	-9%	East	52	66	14	26.9%	Hall Green	14	20	6	42.9%
							Hodge Hill	24	31	7	29.2%
							Yardley	14	15	1	7.1%
15	-9%	North	15	27	12	80.0%	Erdington	12	21	9	75.0%
							Sutton Coldfield	3	6	3	100.0%
							Edgbaston	25	17	-8	-32.0%
58	-9%	South	58	54	-4	-6.9%	Northfield	22	25	3	13.6%
							Selly Oak	11	12	1	9.1%
							Ladywood	33	43	10	30.3%
52	-9%	West & Central	52	66	14	26.9%	Perry Barr	19	23	4	21.1%
							<b>178</b>	<b>-9%</b>	<b>Birmingham</b>	<b>177</b>	<b>213</b>
<b>Fall in performance and not meeting Measure</b>											
<b>Improvement in performance, but not achieving Measure</b>											
<b>Achieving Measure</b>											

